

Entry / ECO

Standard / STD

Professional / PRO

ODM & OEM

Intelligent / INT

STD
Specifications



LED Downlight
DL79 Series

 **RL Europe**
Your partner in LED



Introduction

This is a multiple head spot downlight (1/2/3 heads) with surface mount way. It adopts high lumen and high color rendering index COB and high transmittance PC for uniform light output. Screwless on surface makes it more compact and elegant, 250 degree horizontal rotation and 90 degree vertical rotation for flexible lighting direction adjustment. ADC12 Aluminum lamp body offers a great thermal management, lamp body is slim but with big lighting surface, easy installation and maintenance provides a super convenience for different applications.

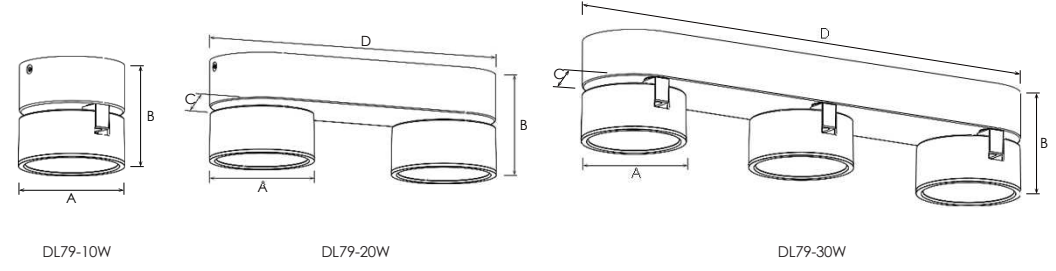
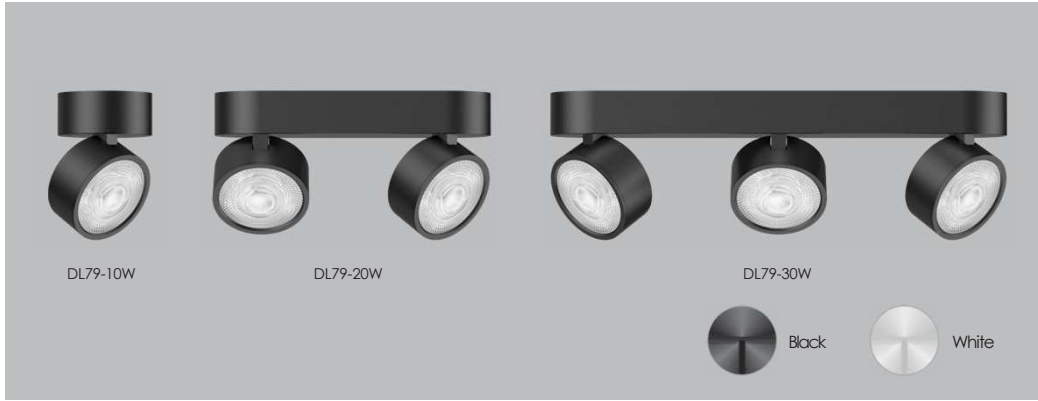
Features

- Multiple heads optional: 1/2/3 heads
- Screwless on surface with minimalist style
- High lumen efficiency with CRI90 led light source
- Adjustable lighting orientation with 250° in horizontal direction and 90° in vertical direction
- Finished color: RAL 9016 White/ RAL9005 Black
- Quick install, fixed with one screw only
- Dimming way: Triac/DAU
- Flicker free driver

Application Areas

It is suitable for supermarket, specialty store, show window, exhibition hall; focus lighting, decorative and background lighting, where attention is focused on subjects to emphasize special visual points.





Technical Data Sheet

Code		DL79-10W	DL79-20W	DL79-30W	
Dimension(mm)		Ø90*87	260*89*87	430*89*87	
Cutout (mm)		-	-	-	
Watt(W)		10W	20W	30W	
Rated Input Voltage		AC220-240V			
Input Voltage		AC198-264V			
LED Module Input		-			
Light Source		COB			
SDCM		<5			
CCT(K)		1-CCT: 2700K/3000K/4000K/5000K			
CCT Selection DIP Switch		-			
Luminous Flux (lm) ±5% CRI90	1-CCT	Non-DIM	1000-1200	2000-2400	3000-3650
		DIM	900-1100	1800-2200	2700-3300
	3-CCT	Non-DIM	-	-	-
		DIM	-	-	-
CRI		90			
Beam Angle (°)		24° / 36° / 60°			
UGR		-			
LED Driver		Driver built-in			
Dimming Option		Triac / DALI			
Sensor		NO			
Emergency Kits		NO			
Electrical Class		Class I			
Ingress Protection(IP Rating)		IP20			
Impact Resistance(IK Rating)		IK03			
Product Finishing		White RAL 9016/Black RAL9005			
Optics Material		PC			
Housing Material		Aluminium			
Lifetime (hr)		50,000h			
Glow wire test (°C)		750°C			
Operating Temp.(°C)		-20°C~40°C			
Storage Temp.(°C)		-20°C~65°C			
Installation		Surface mount			

Measurement

Code	Dimension(mm)				Size (mm)	Product Weight (Kg)		Package weight (Kg)		Carton Size (cm)	Qty/CTN	20GP (pcs)	40HQ (pcs)
	A	B	C	D		N.W/PC	G.W/PC	N.W/CTN	G.W/CTN				
DL79-10W	Ø90	87	-	-	Ø90*87	0.56	0.66	6.72	8.31	35*24*24	12	16092	36480
DL79-20W	Ø90	87	89	260	260*89*87	1.29	1.53	7.74	9.67	35*30*24	6	6534	14340
DL79-30W	Ø90	87	89	430	430*89*87	1.89	2.22	11.34	13.99	47*35*24	6	4104	9120

Driver Datasheet(Non-dimmable)

Total load wattage		10W	20W	30W
Output	Rated output current	250mA	540mA	750mA
	Output Voltage range	DC30-40V		
	Line Regulation	±5%		
	Setup Rise Time	≤0.5S		
	Flickering Index	<10%		
Input	Rated Input Voltage	220-240VAC		
	Input Voltage	198-264VAC		
	Frequency	50/60HZ		
	Rated Input Current	≤0.06A	≤0.11A	≤0.16A
	Input Current	≤0.06A	≤0.12A	≤0.17A
	Power Factor	0.9		
	THD	<20% @230V		
	Efficiency	≥80%	≥87%	≥88%
Protection	No load wattage	<0.5W		
	Short circuit protection	PASS		
	Over voltage protection	PASS		
	Over temperature protection	PASS		
Safety & EMC	Withstand voltage	I/P-FG:1.5KVac,<5mA 60S		
	Isolation Resistance	500VDC, ≥2M Ω		
	Surge	IEC/EN61000-4-5(P<25W; L-N:500V, L/N-PE:1KV)		IEC/EN61000-4-5 (P≥25W L-N:1KV, L/N-PE:2KV)
	EMC Emission	EN55015, EN61000-3-2		
EMC Immunity	EN61000-4-2,3,4,5,6,8,11; EN61547			

Driver Datasheet(Triac Dimmable)

Total load wattage		10W	20W	30W
Output	Rated output current	230mA	500mA	700mA
	Output Voltage range	DC23-40V		
	Line Regulation	±5%		
	Setup Rise Time	<500ms @230V		
	Flickering Index	<5%(NO RISK)		
Input	Rated Input Voltage	AC220-240V		
	Input Voltage	AC198-264V		
	Frequency	50HZ		
	Rated Input Current	≤0.06A	0.11A	0.16A
	Input Current	≤0.06A	0.12A	0.17A
	Power Factor	0.9		
	THD	<20% @230V		
	Efficiency	≥78%	≥82%	≥85%
	No load wattage	<1W@230V		
Protection	Short circuit protection	PASS		
	Over voltage protection	PASS		
	Over temperature protection	PASS		
Safety & EMC	Withstand voltage	I/P-FG:1.5kVac,<5mA 60S		
	Isolation Resistance	500VDC, ≥2M Ω		
	Surge	IEC/EN61000-4-5 (P<25W; L-N:500V, L/N-PE:1KV)	IEC/EN61000-4-5 (P≥25W L-N:1KV, L/N-PE:2KV)	
	EMC Emission	EN55015, EN61000-3-2		
	EMC Immunity	EN61000-4-2,3,4,5,6,8,11; EN61547		

Driver Datasheet (DALI Dimmable)

Total load wattage		20W	30W
Output	Rated output current	500mA	800mA
	Output Voltage range	DC30-40V	
	Line Regulation	±5%	
	Setup Rise Time	≤1S	
	Flickering Index	≤1%(NO RISK)	
Input	Rated Input Voltage	AC220-240V	
	Input Voltage	AC198-264V	
	Frequency	50/60HZ	
	Rated Input Current	≤0.10A	≤0.15A
	Input Current	≤0.12A	≤0.17A
	Power Factor	0.9	
	THD	<20% @230V	
Efficiency	≥84%	≥85%	
No load wattage	<0.5W@230V		
Protection	Short circuit protection	PASS	
	Over voltage protection	PASS	
	Over temperature protection	PASS	
Safety & EMC	Withstand voltage	I/P-FG:1.5kVac,<5mA 60S	
	Isolation Resistance	500VDC, ≥2M Ω	
	Surge	IEC/EN61000-4-5 (P<25W; L-N:500V, L/N-PE:1KV)	IEC/EN61000-4-5 (P≥25W L-N:1KV, L/N-PE:2KV)
	EMC Emission	EN55015, EN61000-3-2	
	EMC Immunity	EN61000-4-2,3,4,5,6,8,11; EN61547	

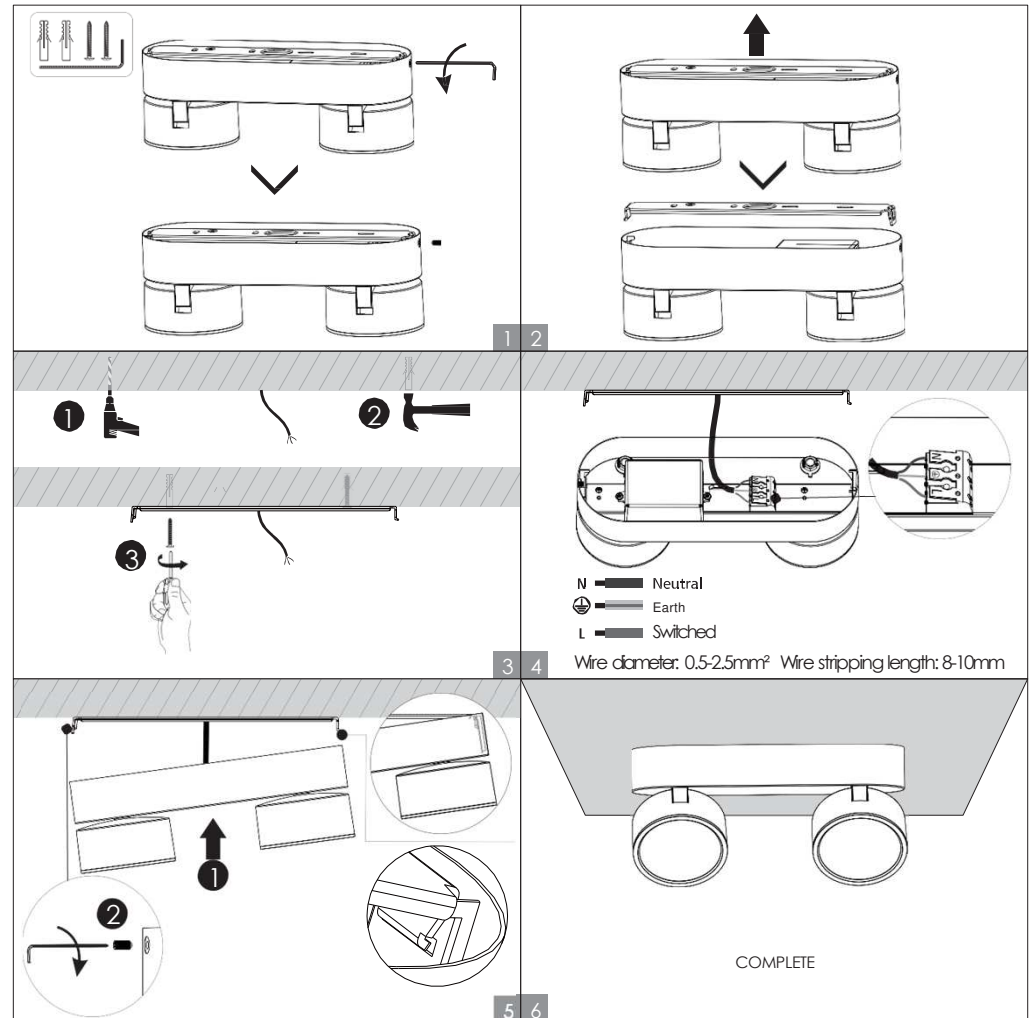
Installation Procedure

WARNING

- 1.Switch off before installation.
- 2.Switch on only after complete installation and examination of the circuit.
- 3.Professional electrician for installation and maintenance only.



Surface mount installation





RL Europe
Your partner in LED

www.rleurope.ch

info@rleurope.ch

TEL: +41 (0)91 6832255

Add: via E. Bossi 12/B, CH-6830 Chiasso (TI)