

Entry /ECO

Standard /STD

Professional/PRO

ODM & OEM

Intelligent/INT



LED Wall Light  
WL106 Series





## Introduction

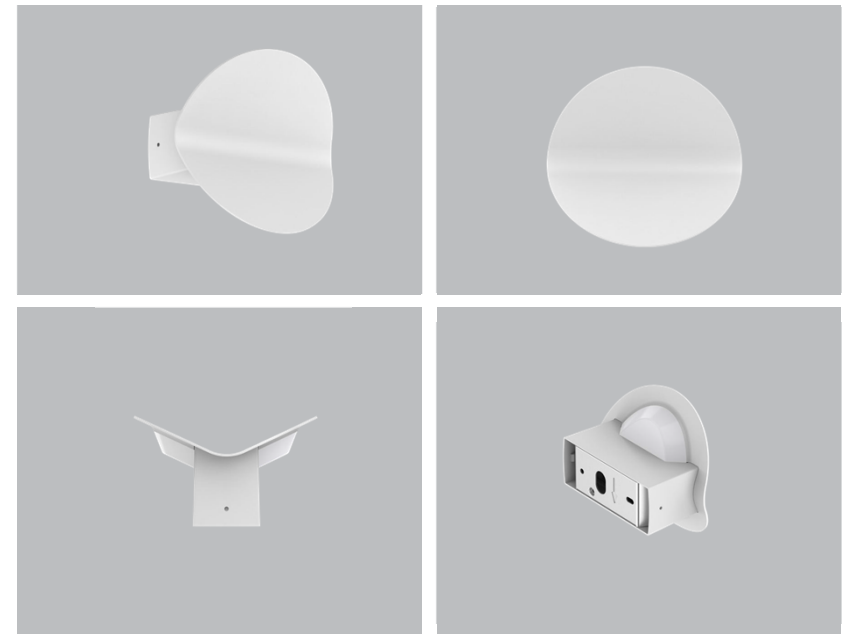
WL106 is a symmetrical lighting design indoor wall lamp. It has a leaf shape and looks smooth and compact, suitable for lighting decoration. ADC12 aluminum housing offers great thermal management. Up&down lighting has 160degree wide beam angle, which is greatly increased decorative effect

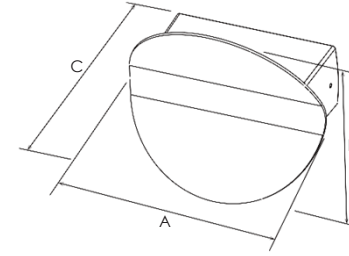
## Features

1. Smoothly surface with leaf shape.
2. Symmetrical lighting has 160degree wide beam angle.
3. Interchangeable CCT(3000K+4000K+5700K)with slide switch.
4. Internal flicker free driver.
5. Dimming ways: Non-dim, triac dim.
6. Quick installation.

## Application Areas

It's widely used in indoor corridor, study room, bedroom,lobby etc.





## Technical Data Sheet

Code No.	WL106-8W		
Dimension(mm)	145*135*80		
Cutout (mm)	-		
Watt(W)	2*4W		
Rated Input Voltage(V)	AC230V		
Input Voltage(V)	AC200-240V		
LED Module Input	-		
Light Source	SMD		
SDCM	<6		
CCT(K)	1-CCT: 3000K/4000K/5000K/5700K     3-CCT: 3000K + 4000K + 5700K		
CCT Selection DIP Switch	Yes		
Luminous Flux (lm) ±5%	Non-DIM	1. CCT	700-730
	DIM		680-700
	Non-DIM	3. CCT	680-720
	DIM		660-700
CRI	80		
Beam Angle (°)	160°		
UGR	-		
LED Driver	Built-in		
Dimming Option	Triac		
Sensor	NO		
Emergency Kits	NO		
Electrical Class	Class I		
Ingress Protection (IP Rating)	IP20		
Impact Resistance (IK Rating)	IK06		
Product Finishing(Base)	White		
Optics Material	PC		
Housing Material	Aluminium+PC		
Lifetime (hr)	50,000h		
Glow wire test (°C)	850°C		
Operating Temp. (°C)	-20°C~45°C		
Storage Temp. (°C)	-20°C~65°C		
Installation	wall mount		

## Measurement

Code	Dimension(mm)				Size(mm)	Product Weight (Kg)		Package weight (Kg)		Carton Size(cm)	Qty/CTN	20GP (pcs)	40HQ (pcs)
	A	B	C	D		N.W/PC	G.W/PC	N.W/CTN	G.W/CTN				
WL106	145	135	80		145*135*80	0.36	0.46	11	12.5	44.5*35.5*41.5	24	9620	20904

## Driver Datasheet(Non-dimmable)

Total load wattage		8W
Output	Output Voltage range	DC60-75V
	Rated output current	105mA
	Line Regulation	±5%
	Setup, Rise Time	≤0.5S
	Flickering Index	≤3%(NO RISK)
Input	Input Voltage	AC85-265V
	Rated Input Voltage(V)	AC100-240V
	Frequency	50Hz
	Input Current	≤0.1A
	Rated Input Current	≤0.09A
	Power Factor	0.9
	THD	-
	Efficiency	≥85%
Protection	No load wattage	≤0.5W
	Short circuit protection	Pass
	Over voltage protection	Pass
Safety & EMC	Over temperature protection	Pass
	Withstand voltage	-
	Isolation Resistance	-
	Surge	IEC/EN61000-4-5 (P<25W; L-N:500V, L/N-PE:1KV)
	EMC Emission	IEC/EN55015, IEC/EN61000-3-2
EMC Immunity	IEC/EN61000-4-2,3,4,5,6,8,11; IEC/ EN61547	

# Driver Datasheet (Triac Dimmable)

Total load wattage		8W
Output	Output Voltage range	DC65-75V
	Rated output current	95mA
	Line Regulation	±5%
	Setup, Rise Time	≤0.5S
	Flickering Index	≤3%(NO RISK)
Input	Input Voltage	AC200-264V
	Rated Input Voltage(V)	AC200-240V
	Frequency	50Hz
	Input Current	≤0.05A
	Rated Input Current	≤0.05A
	Power Factor	0.88
	THD	-
	Efficiency	≥85%
	No load wattage	≤0.5W
Protection	Short circuit protection	Pass
	Over voltage protection	Pass
	Over temperature protection	Pass
Safety & EMC	Withstand voltage	-
	Isolation Resistance	-
	Surge	IEC/EN61000-4-5(P<25W; L-N:500V, L/N-PE:1KV)
	EMC Emission	IEC/EN55015, IEC/EN61000-3-2
	EMC Immunity	IEC/EN61000-4-2,3,4,5,6,8,11;IEC/ EN61547

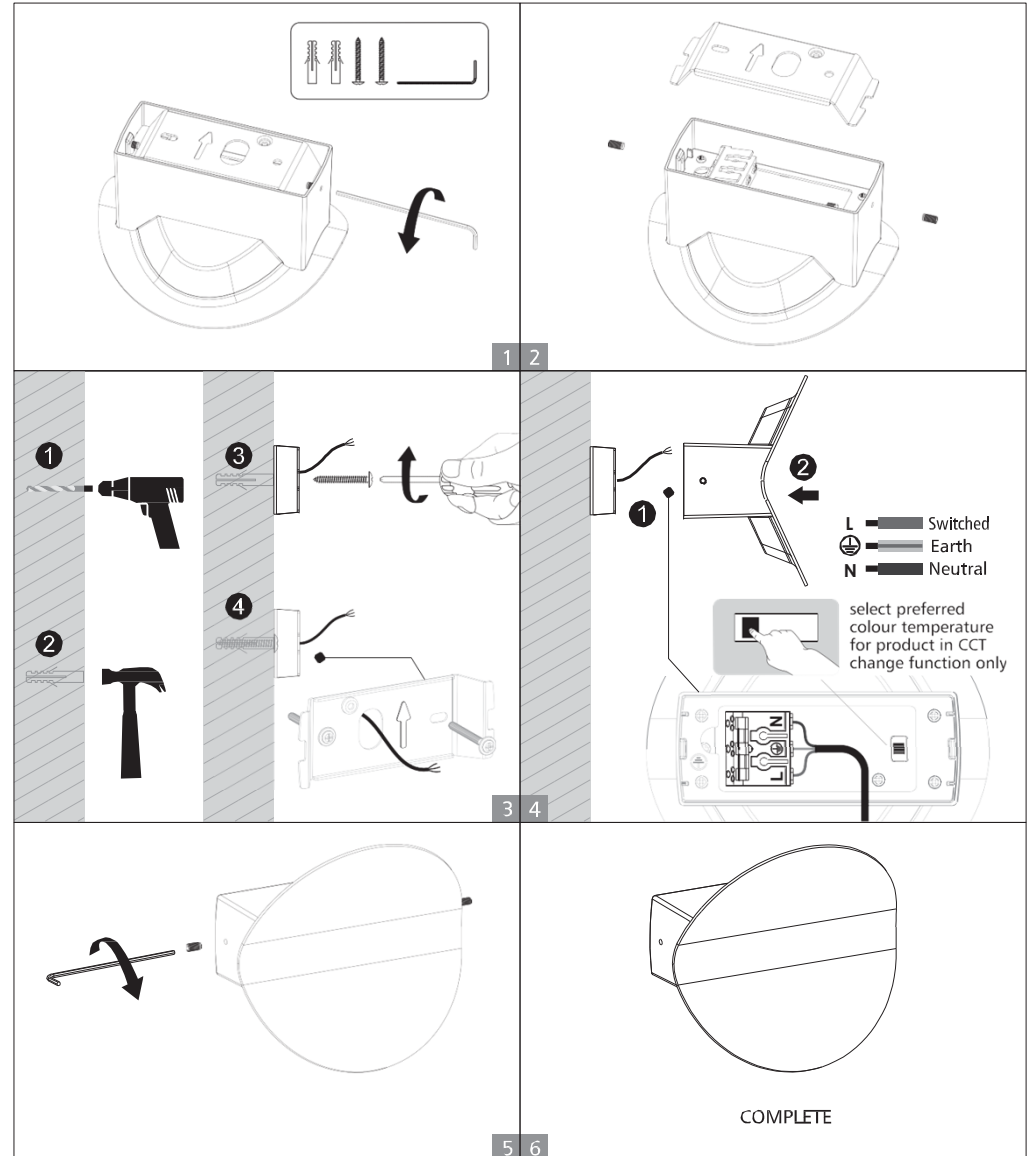
## Installation Instruction

### WARNING

1. Switch off before installation.
2. Switch on only after complete installation and examination of the circuit.
3. Professional electrician for installation and maintenance only.



## Wall mounted Installation





**RL Europe**  
Your partner in LED

[www.rleurope.ch](http://www.rleurope.ch)

[info@rleurope.ch](mailto:info@rleurope.ch)

TEL: +41 (0)91 6832255

Add: via E. Bossi 12/B, CH-6830 Chiasso (TI)