

Entry /ECO

Standard /STD

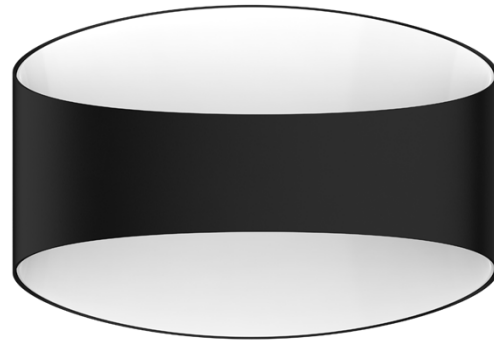
Professional/PRO

ODM & OEM

Intelligent/INT



PRO
Specifications



LED Wall Light

WL95 Series



Introduction

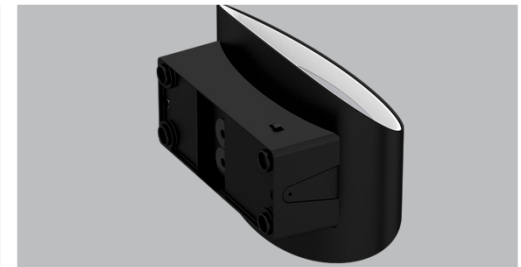
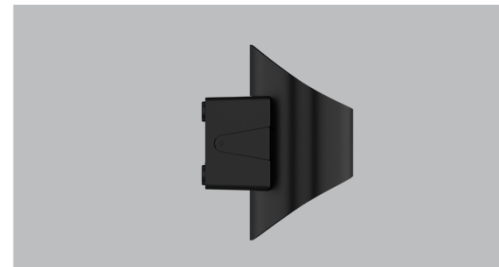
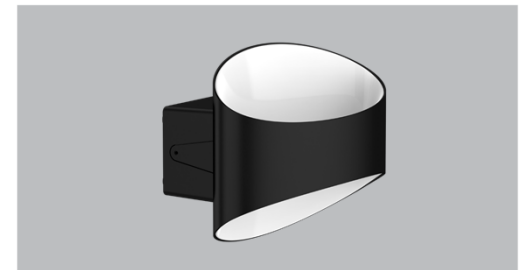
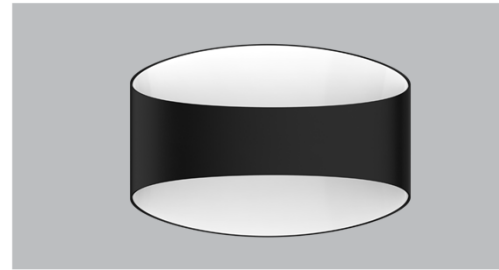
WL95 is an indoor oval shape wall lamp. It adopts high lumen SMD light source, up & down lighting design makes a soft and uniform lighting output. ADC12 aluminum housing offers a great thermal management. PC reflector can be customized in different colors(Standard color is white).

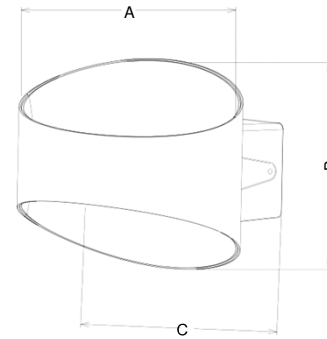
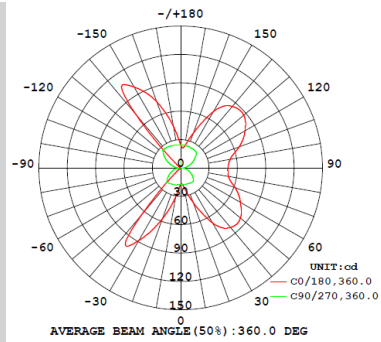
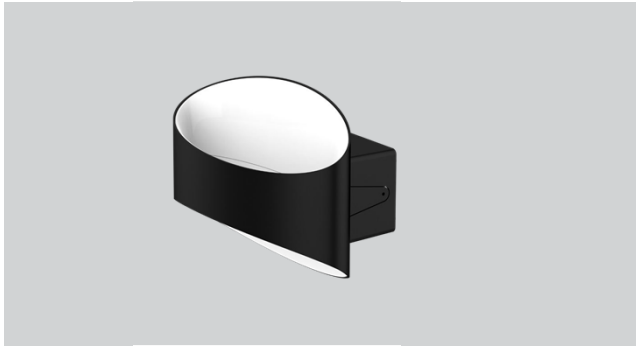
Features

- Hollow with up & down lighting design.
- Interchangeable CCT(3000K+4000K)with slide switch.
- ADC aluminum housing offers great heat dissipation.
- Can do customized PC reflector with different color.
- Non-dim and triac dimming options.
- Internal flicker free driver.

Application Areas

It is designed for private lighting applications in living room, corridor, stairway, bedroom etc.





Technical Data Sheet

Code No.	WL95-8W-C2	WL95-8W-P2	
Dimension(mm)	200*140*107		
Cutout (mm)	-		
Watt(W)	8W		
Rated Input Voltage(V)	110V/230V	230V	
Input Voltage(V)	100-240V	220-240V	
LED Module Input	-		
LED	SMD		
SDCM	SDCM≤6		
CCT(K)	2CCT: 3000K+4000K		
CCT Selection DIP Switch	YES		
Luminous Flux (lm) ±5%	Non-DIM	1-CCT	-
	DIM	1-CCT	-
	Non-DIM	2-CCT	380-435
	DIM	2-CCT	370-425
CRI	80		
Beam Angle (°)	360°		
UGR	-		
LED Driver	Built-in		
DIM	yes		
Protection Class	Class I		
IP Rating	IP40		
IK Rating	IK06		
Product Finishing	Black RAL9005		
Optics Material	PC		
Material	Aluminium		
Lifetime (hr)	50,000h		
Glow wire test (°C)	850°C		
Operating Temp. (°C)	-20°C~45°C		
Storage Temp. (°C)	-20°C~65°C		
Installation	Wall mount		

Measurement

Code	Dimension(mm)			Size	Product Weight (Kg)		Packageweight (Kg)		Carton Size(cm)	Qty/CTN	20GP (pcs)	40HQ (pcs)
	A	B	C		N.W/PC	G.W/PC	N.W/CTN	G.W/CTN				
WL95-8W	200	140	107	200*140*107	0.52	0.56	12.5	13.4	64*42.5*38	24PCS	6480	12960

Driver Datasheet(Non-dimmable)

Total load wattage		8W
Output	Output Voltage range	DC65-75V
	Rated output current	105mA
	Line Regulation	±5%
	Setup, Rise Time	≤0.5S
	Flickering Index	3%,IEEE1789 NO RISK
Input	Input Voltage	AC85-265V
	Rated Input Voltage(V)	AC100-240V
	Frequency	50/60Hz
	Input Current	0.09A
	Rated Input Current	100V@0.09A/230V@0.04A
	Power Factor	0.9
	THD	-
	Efficiency	86%
Protection	No load wattage	0.5W
	Short circuit protection	Pass
	Over voltage protection	Pass
Safety & EMC	Over temperature protection	Pass
	Withstand voltage	-
	Isolation Resistance	-
	Surge	IEC/EN61000-4-5 (P<25W; L-N:500V)
	EMC Emission	EN55015, EN61000-3-2
EMC Immunity	EN61000-4-2,3,4,5,6,8,11; EN61547	

Driver Datasheet(Triac Dimmable)

Total load wattage		8W
Output	Output Voltage range	DC55-65V
	Rated output current	95mA
	Line Regulation	±5%
	Setup, Rise Time	<0.5S
	Flickering Index	≤5%(NO RISK)
Input	Input Voltage	200-240V
	Rated Input Voltage(V)	230V
	Frequency	50Hz
	Input Current	0.05A
	Rated Input Current	0.04A
	Power Factor	≥0.88
	THD	<25% @230V
	Efficiency	≥85%
	No load wattage	≤1W
	Short circuit protection	Pass
Protection	Over voltage protection	Pass
	Over temperature protection	Pass
	Withstand voltage	-
Safety & EMC	Isolation Resistance	-
	Surge	IEC/EN61000-4-5(P<25W; L-N:500V)
	EMC Emission	EN55015, EN61000-3-2
	EMC Immunity	EN61000-4-2,3,4,5,6,8,11; EN61547

Important Safety Instructions

Basic safety precautions should always be followed when installing, including the following:

1. Read all instructions.
2. Licensed electrician for installation only
3. Always ensure the power is OFF and the fitting has cooled down before performing any maintenance, cleaning, changing the globe or adjustment to the fitting.
4. Do not install any luminaire near the heat source.
5. Do not exceed the nominal supply voltage or amperage ratings.
6. To avoid injury or damage to the fitting, please ensure that power leads and screws are secure maintenance, cleaning, changing the globe or adjustment to the fitting.before connecting the power.

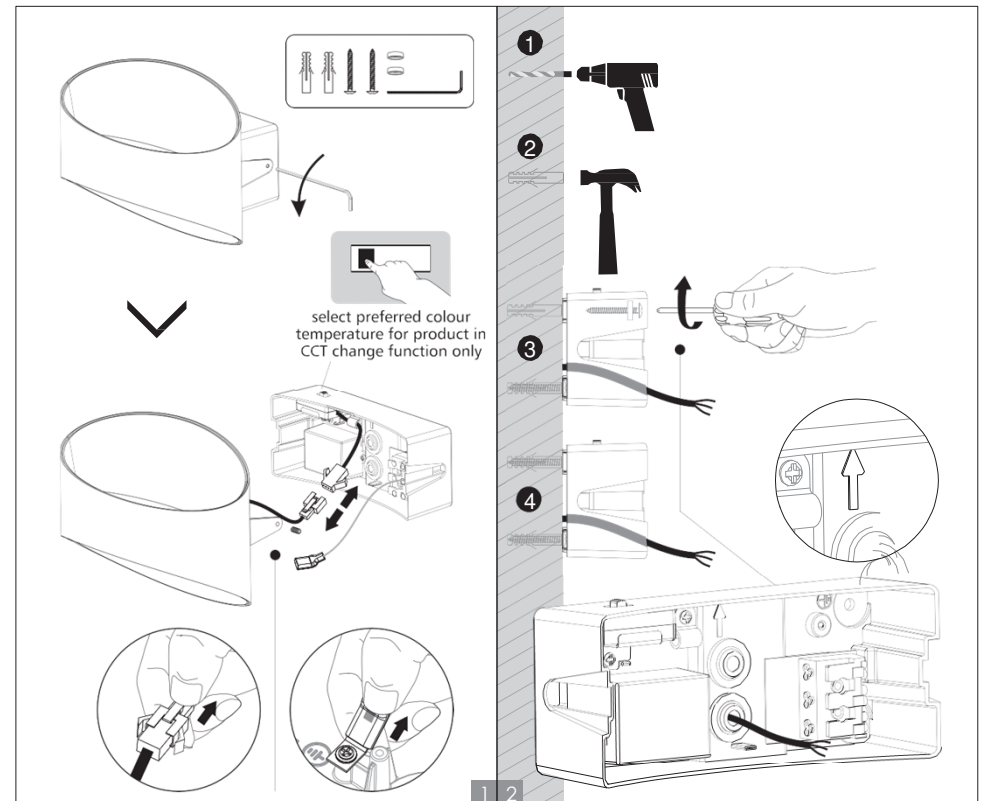
Installation Instruction

WARNING

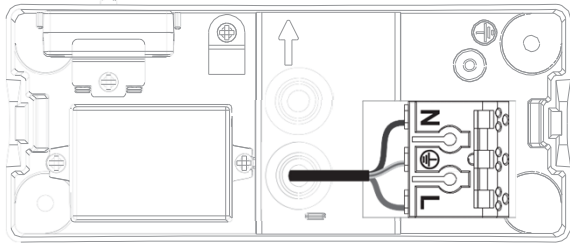
1. Switch off before installation.
2. Switch on only after complete installation and examination of the circuit.
3. Professional electrician for installation and maintenance only.



Wall mounted Installation



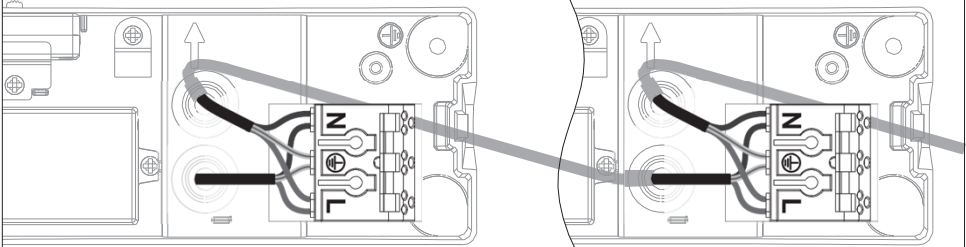
Wiring for single lamp



- L — Switched
 - ⊕ — Earth
 - N — Neutral
- Wire diameter: 0.5-2.5mm²
Wire stripping length: 8-10mm

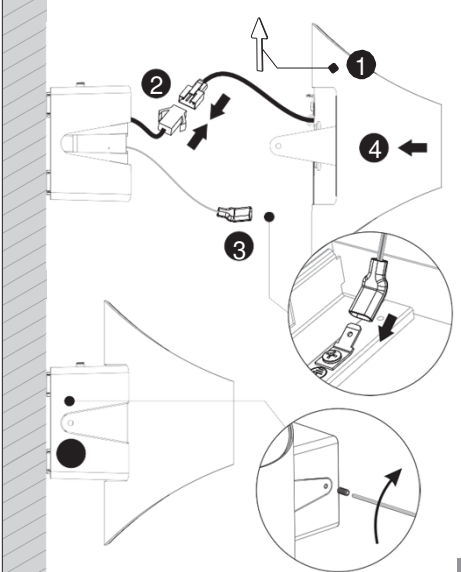
3

Series connection

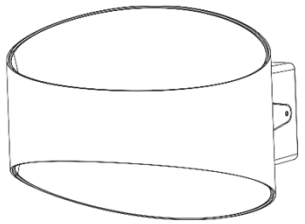


- L — Switched
 - ⊕ — Earth
 - N — Neutral
- Wire diameter: 0.5-2.5mm²
Wire stripping length: 8-10mm

4



5 6



COMPLETE



RL Europe
Your partner in LED

www.rleurope.ch

info@rleurope.ch

TEL: +41 (0)91 6832255

Add: via E. Bossi 12/B, CH-6830 Chiasso (TI)