

Entry /ECO

Standard /STD

Professional/PRO

ODM & OEM

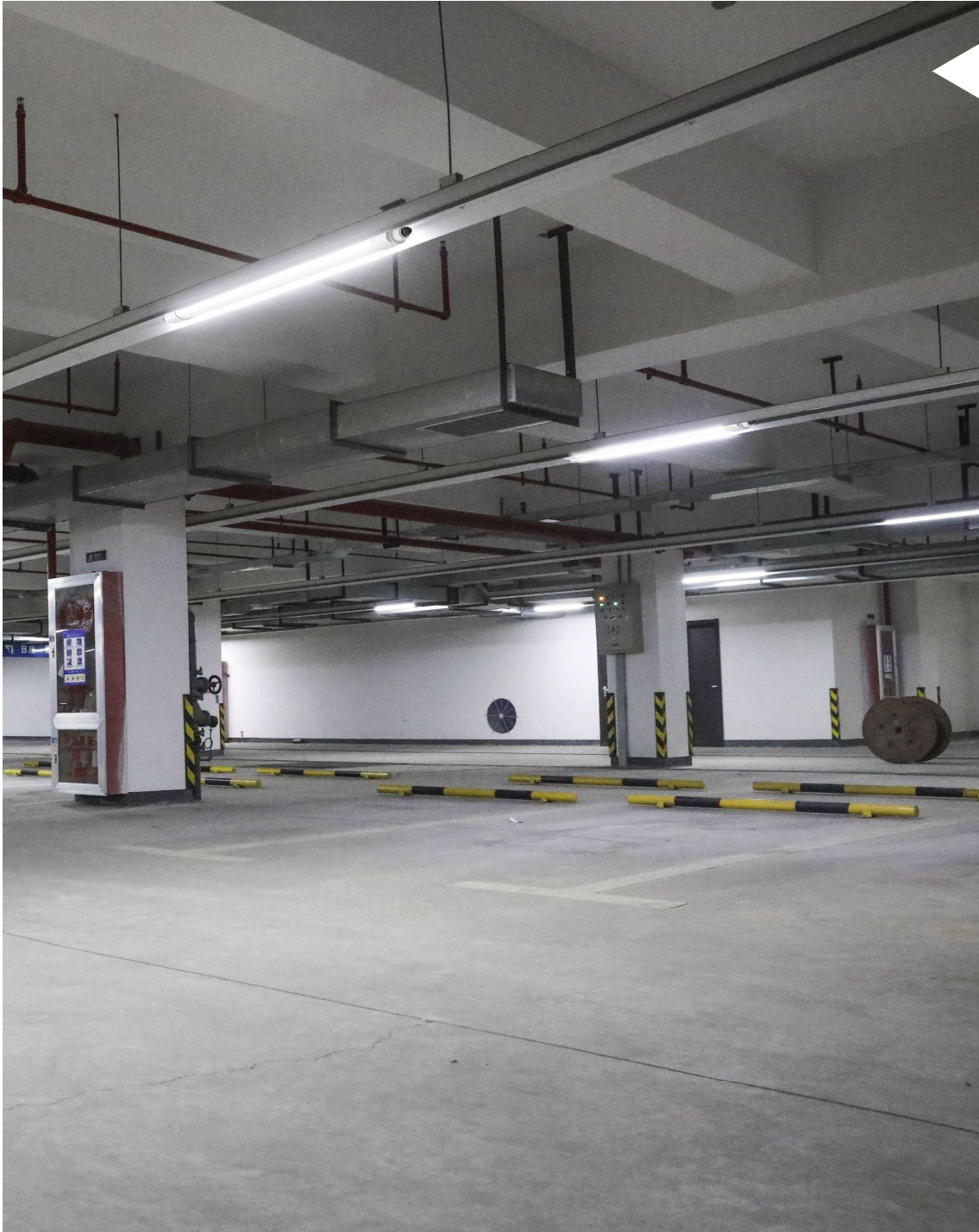
Intelligent/INT



ECO
Specifications



LED Batten Light
DB129 Series



Introduction

DB129 is a high quality LED batten with high luminous efficacy 110lm/w. With a reliable and robust housing structure (IK08 & IP66), this maximizes the endurance and contributes to its long lifetime. With its flexible installation accessories, it can install as surface mounting, pendant and splicing, which can be used in a wider applications. Three size options: 600mm, 1200mm, 1500mm), it's an ideal replacement for traditional fluorescent batten.

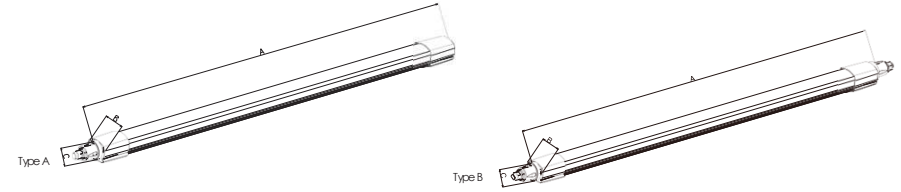
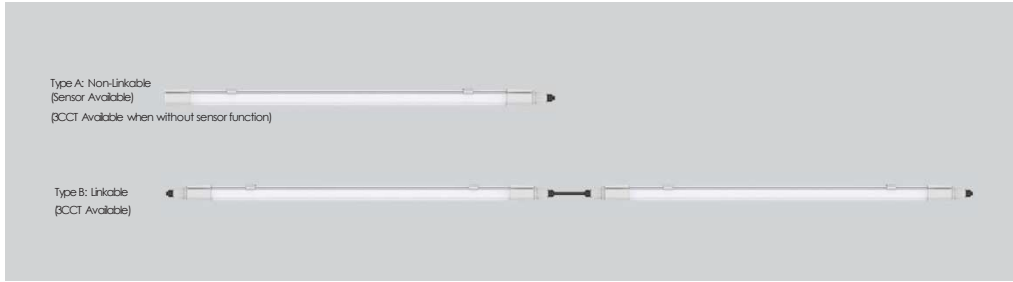
Features

- Compact design, suitable for both indoor and outdoor applications.
- IP66 waterproof, IK08 impact protection.
- Lifespan: approx. 50,000 hours.
- End caps: made of shockproof polycarbonate (PC).
- Flexible installation through sliding mounting bracket.
- Class II, splicing, sensor (Type A) and interchangeable CCT optional.
- Tool free mains cable installation on both sides through twist lock fastener cover at both sides.

Application Areas

This linear fixture is widely used in shopping mall, office, car park, station, home.





Technical Data Sheet

Code No.	DB129A/B-600-20W	DB129A/B-1200-40W	DB129A/B-1500-48W		
Dimension(mm)	600*70*57	1200*70*57	1500*70*57		
Cutout (mm)		-			
Watt(W)	20W	40W	48W		
Rated Input Voltage(V)	230V				
Input Voltage(V)	220-240V				
LED Module Input	-				
Light Source	SMD				
SDCM	<6				
CCT(K)	1-CCT: 3000K/4000K/5000K/5700K & 3-CCT: 3000K + 4000K + 5700K				
CCT Selection DIP Switch	Yes				
Luminous Flux (lm) ±5%	Non-DIM	1-CCT	1900-2100	4100-4700	5100-6100
			-		
	DIM	3-CCT	1900-2100	4100-4700	5100-6100
			-		
CRI	CRI80				
Beam Angle (°)	120°				
UGR	-				
LED Driver	Built-in				
Dimming Option	-				
Sensor	Yes				
Emergency Kits	NO				
Electrical Class	Class I I				
Ingress Protection (IP Rating)	IP66				
Impact Resistance (IK Rating)	IK08				
Product Finishing(Base)	Grey RAL 7047				
Materials of Optics	PC				
Materials of Housing	PC				
Lifetime (hr)	50,000h				
Glow wire test (°C)	750°C				
Operating Temp. (°C)	-20°C~45°C				
Storage Temp. (°C)	-20~60°C				
Installation	Surface mount / Pendant / Wall mount				

Measurement

Code	Dimension(mm)				Size(mm)	Product Weight (Kg)		Package weight (Kg)		Carton Size (cm)	Qty/CTN	20GP (pcs)	40HQ (pcs)
	A	B	C			N.W/PC	G.W/PC	N.W/CTN	G.W/CTN				
600	600	70	57		600*70*57	0.45	0.55	5.5	8.5	82*24.5*29	12	6240	14388
1200	1200	70	57		1200*70*57	0.65	0.85	8	12.5	142*24.5*29	12	3456	8052
1500	1500	70	57		1500*70*57	0.75	1	9	15	172*24.5*29	12	2832	6612

Driver Datasheet (Non-Dimmable)

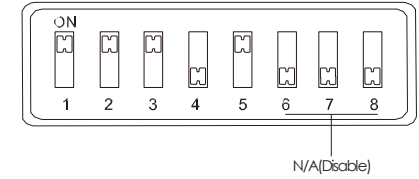
		Total load wattage	20W	40W	48W
Output	Output Voltage range	DC:370-420V			
	Rated output current	50mA	90mA	110mA	
	Line Regulation	±5%			
	Setup, Rise Time	≤0.5S			
	Flickering Index	NO RISK			
Input	Input Voltage	AC230V			
	Rated Input Voltage(V)	AC200-240V			
	Frequency	50/60Hz			
	Input Current	≤0.1A	≤0.22A	≤0.25A	
	Rated Input Current	0.09A	0.18A	0.22A	
	Power Factor	0.9			
	THD	≤20%			
	Efficiency	≥90%			
	No load wattage	<0.5W			
Protection	Short circuit protection	NA			
	Over voltage protection	Pass			
	Over temperature protection	Pass			
Safety & EMC	Withstand voltage	-			
	Isolation Resistance	-			
	Surge	IEC61000-4-5(L-N:0.5KV)		IEC61000-4-5(L-N:1KV)	
	EMC Emission	EN55015, EN61000-3-2			
	EMC Immunity	EN61000-4-2,3,4,5,6,8,11; EN61547			

Driver Datasheet (Sensor)

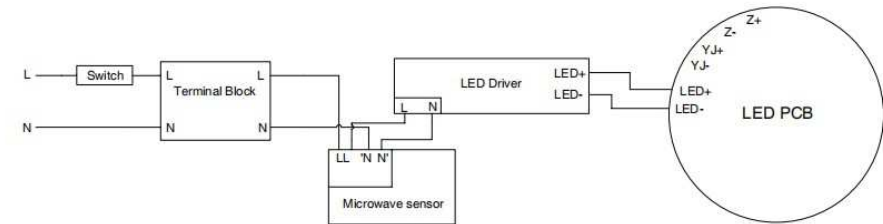
Sensor datasheet	
Operating voltage	220-240VAC 50/60Hz
Power consumption	1.5W±0.5W
Microwave frequency	5.8GHz±75MHz, ISM wave band
Transmission power	<0.5mW
Detection angle	140°
Detection Area	100%/75%/50%/25%(4-7M)
Hold time	5S/30S/60S/3min/5min/10min/20min/30min
Daylight sensor	N/A(Disable)
Stand-by DIM Level	-
Stand-by Period	-
Dimming Range	-
Microwave ON/OFF function	-
Installation Height	Recommended Installation Height: Wall mounted height 1.8m. Ceiling mounted height 3m.
Operating temperature(°C)	-20°C~60°C

Factory settings:

Detection Area	Hold Time	Daylight Sensor
100%	1 min	N/A(Disable)



Wiring Diagram:



Daylight & Microwave Sensor:

Sensor Setting: (Can only be set at the factory)

Detection area		
1	2	
ON	ON	100%
ON	-	75%
-	ON	50%
-	-	25%

Detection area:

Detection area can be reduced by selecting the combination on the DIP switches to fit precisely each application.

Notice 1: The test is based on a height of 3m, the radius is the ground detect distance, which can be selected through the slide switch.

Notice 2: The detectable range is measured by human body whose stature is around 1.6-1.7M with medium size and traveling speed is around 1.0-1.5M per second. If the stature, bodily form and traveling speed are changed, then the detectable range will be changed accordingly.

Notice 3: Test result will be highly influenced by test environment, the more open environment, the closer detect distance; the narrower environment, the longer detect distance. The detector may do self-excitation in a narrow environment.

Hold time			
3	4	5	
ON	ON	ON	5S
ON	ON	-	30S
ON	-	ON	1min
ON	-	-	3min
-	ON	ON	5min
-	ON	-	10min
-	-	ON	20min
-	-	-	30min

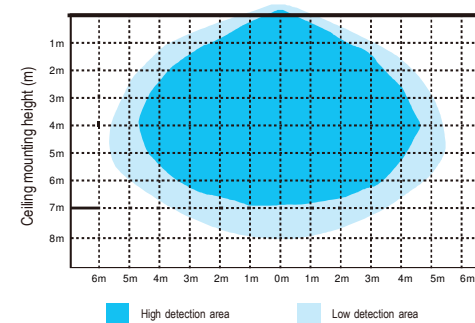
Hold time:

Refers to the time period the lamp remains at 100% illumination after no motion detected.

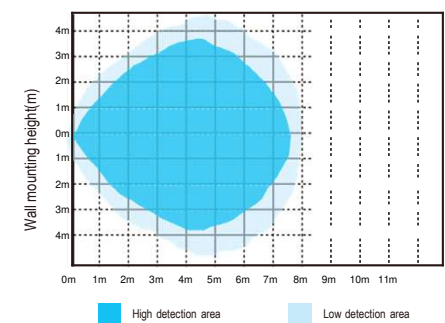
Notice 1: The hold time can be selected by the slide switch. The hold time counting should be started after the sensor is powered on and initialized.

Induction Range

Ceiling Mounting pattern(Unit: m)



Wall Mounting pattern(Unit: m)



Installation Procedure

WARNING

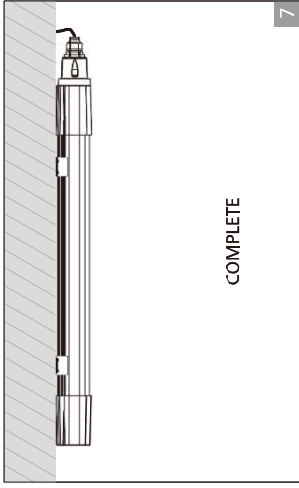
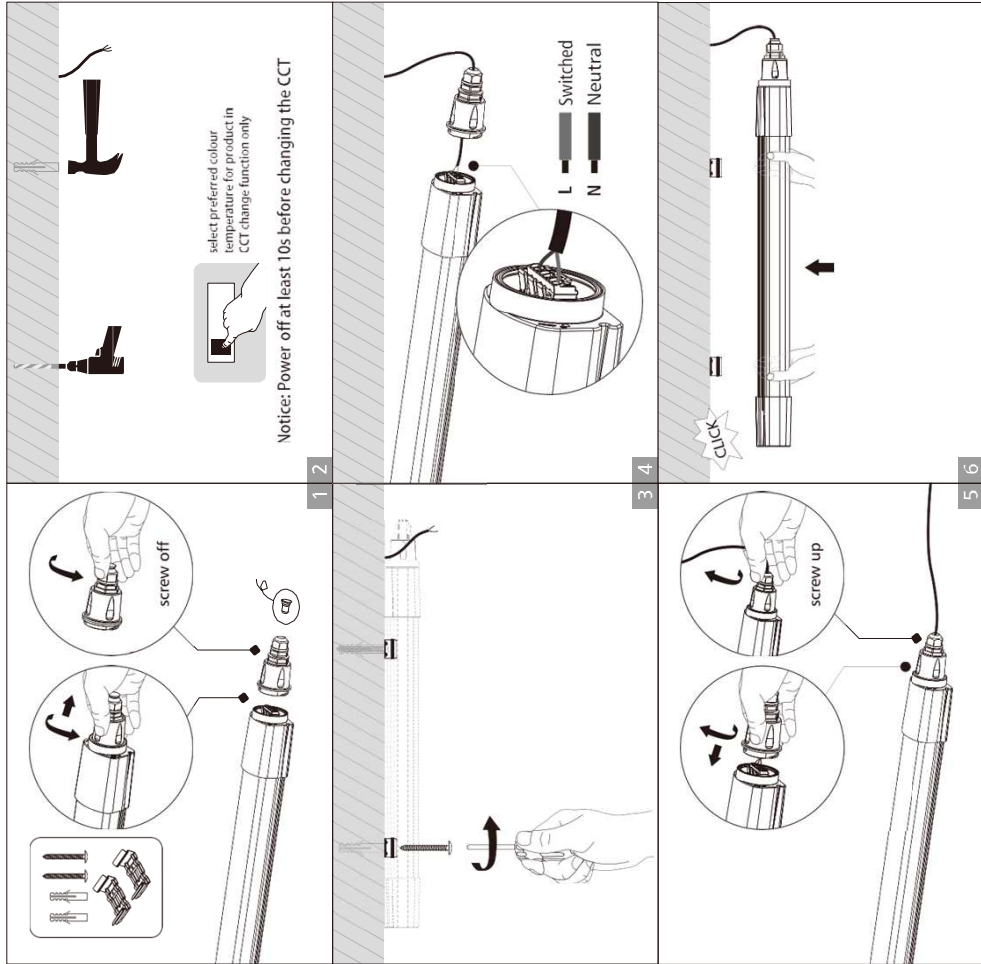
1. Switch off before installation.
2. Switch on only after complete installation and examination of the circuit.
3. Professional electrician for installation and maintenance only.

Turn Off power supply before starting any installation. Read instructions & check you have all the tools & accessories to complete the installation correctly.

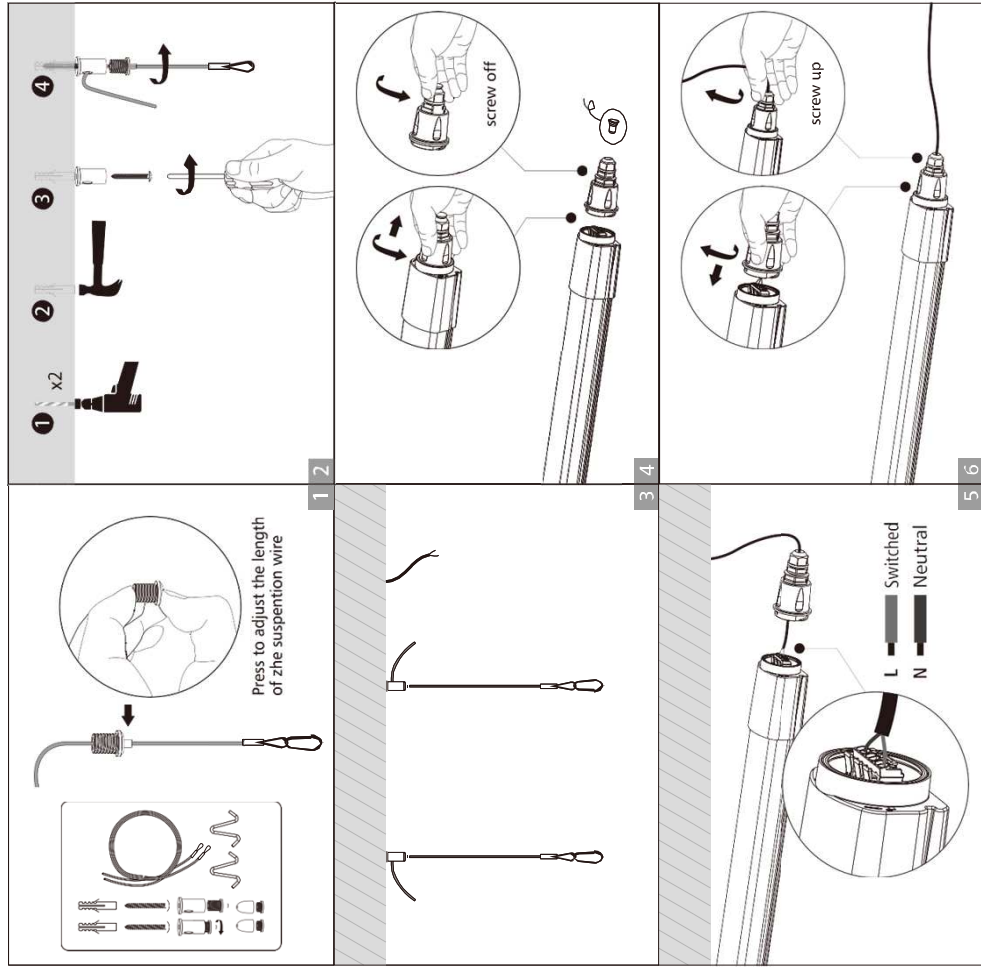


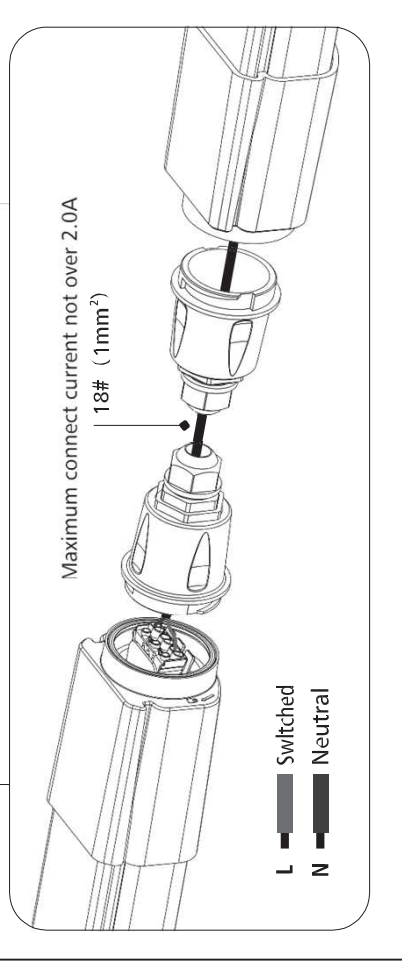
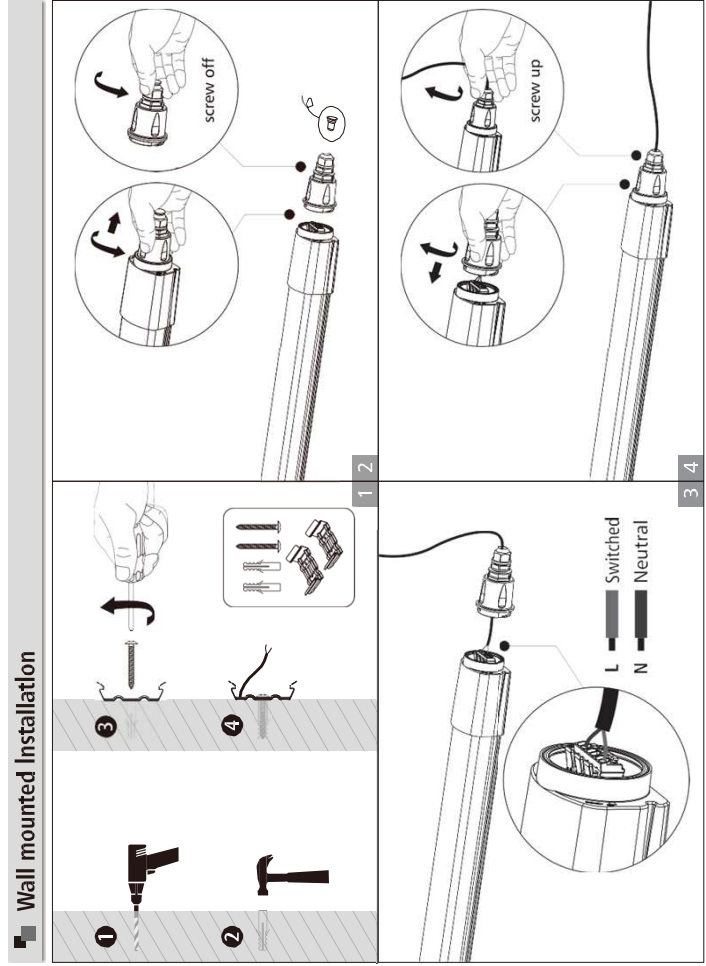
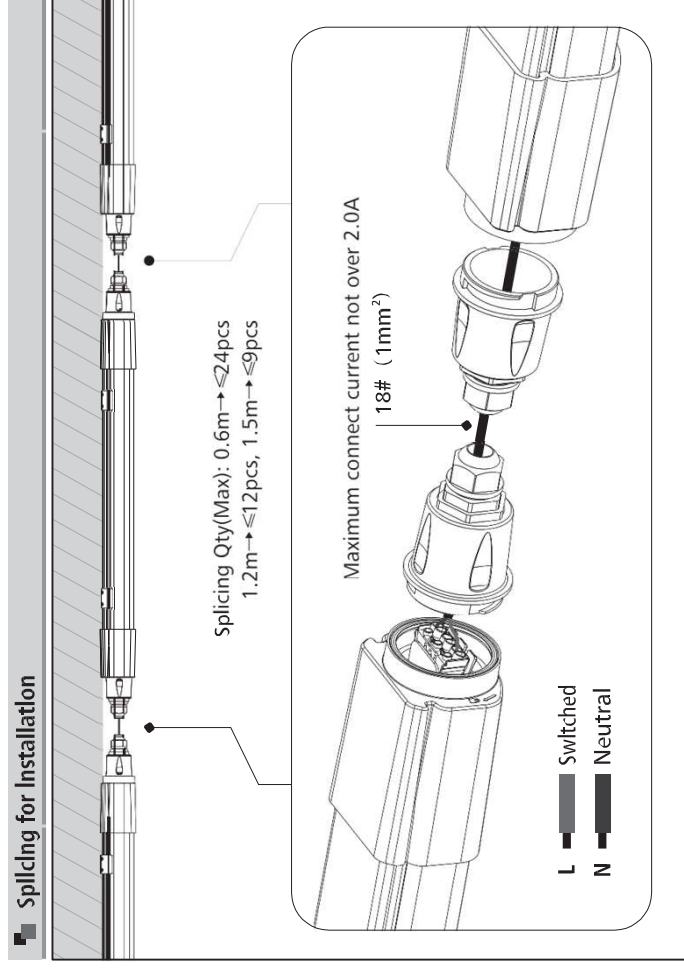
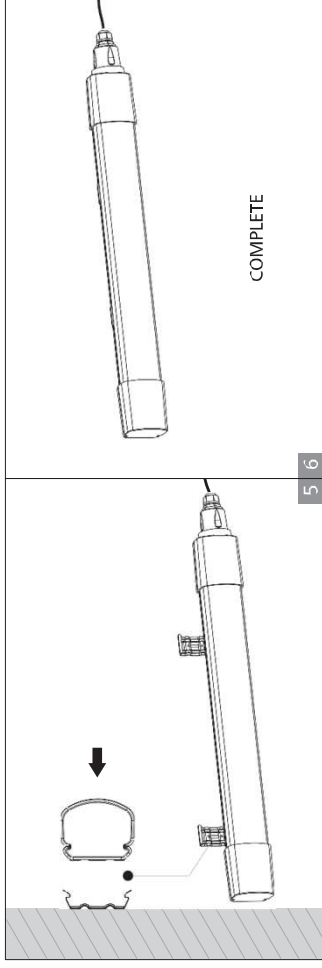
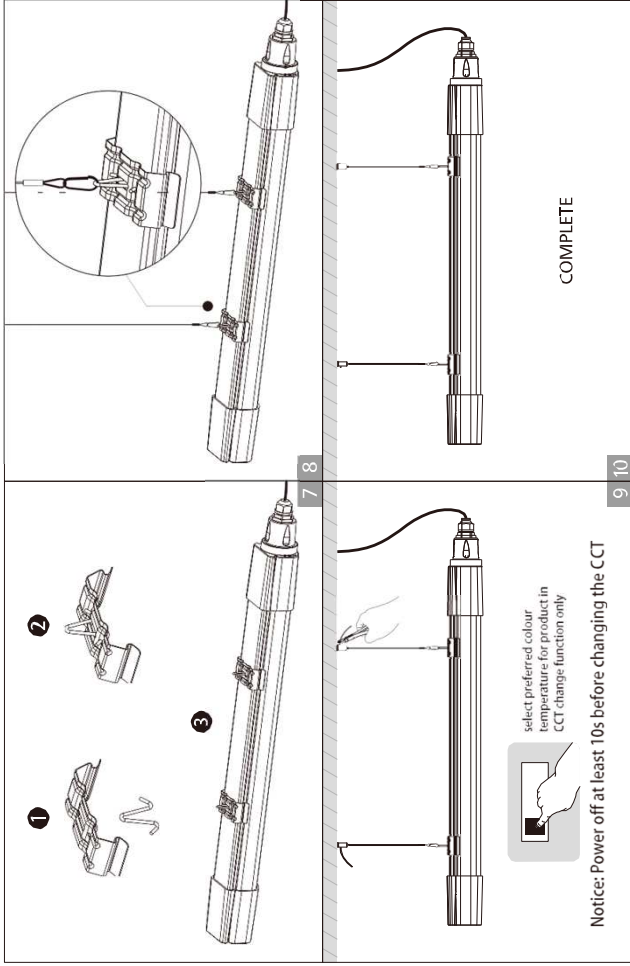
Turn Off
Power Supply

Surface mounted Installation



Suspended Installation







RL Europe
Your partner in LED

www.rleurope.ch

info@rleurope.ch

TEL: +41 (0)91 6832255

Add: via E. Bossi 12/B, CH-6830 Chiasso (TI)