

Entry / ECO

Standard / STD

Professional / PRO

ODM & OEM

Intelligent / INT



STD
Specifications



LED Linear
DB151B Series



Introduction

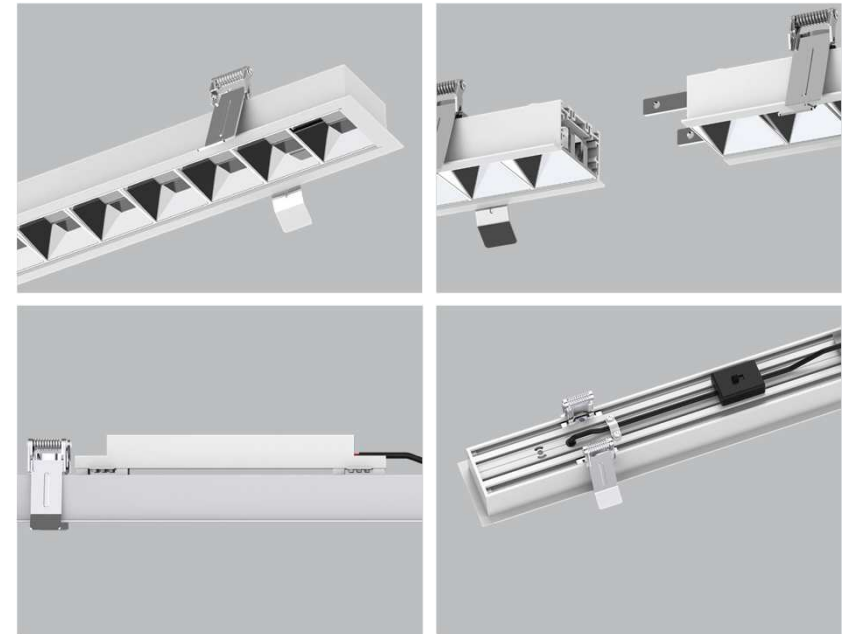
DB151B is a grill design and recessed batten light. It can do straight splicing without quantity limitation. For recessed ways, it has two types accessories with H-shape and N-shape, which could be used according to different application areas.

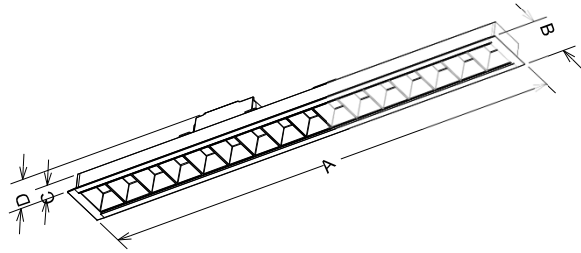
Features

- Grill cover colors: White RAL9016, silver RAL9006 (UGR<19).
- Straight splicing with magnetic end cap, easy for installation.
- No limitation for splicing quantity.
- Interchangeable CCT(3000K+4000K+5700K) with slide switch.
- Finished color: White RAL 9016 / Black RAL 9005.
- Installation ways: Recessed with H-shape and N-shape accessories.
- External flicker free driver, support Non-dim and DALI dim.

Application Areas

This linear fixture is widely used in office, meeting room, museum, hotel, canteen etc.

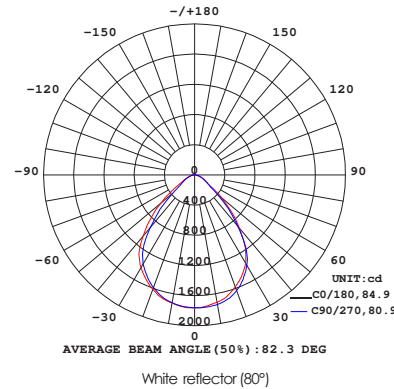
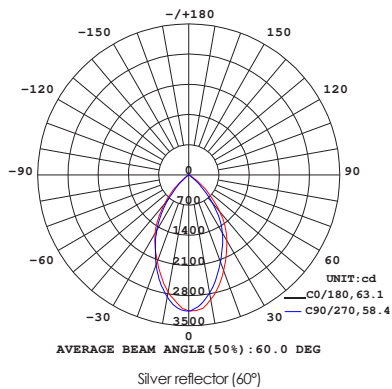




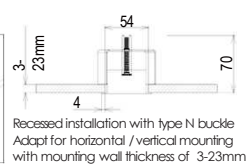
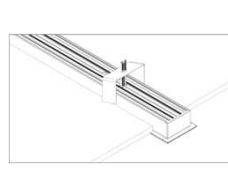
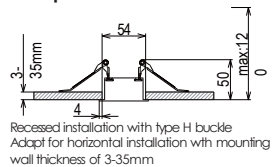
Measurement

Code	Dimension(mm)					Size(mm)	Product Weight (Kg)		Package weight (Kg)		Carton Size(cm)	Qty/CTN	20CP (pcs)	40HQ (pcs)
	A	B	C	D	E		N.W/PC	G.W/PC	N.W/CTN	G.W/CTN				
DB151B-600-15W	615	62	29	59	-	L615*W62*H29	0.71	0.9	8.52	11.72	69.5*42*29	12	4128	9720
DB151B-1200-30W	1208	62	29	59	-	L1208*W62*H29	1.26	1.57	7.56	10.4	129*32*20	6	2070	4992
DB151B-1500-37W	1505	62	29	59	-	L1505*W62*H29	1.54	1.92	9.24	12.68	158.5*32*20	6	1668	3978
DB151B-1800-45W	1802	62	29	59	-	L1802*W62*H29	1.85	2.29	11.1	15.08	188*32*20	6	1458	3360
DB151B-2400-60W	2395	62	29	59	-	L2395*W62*H29	2.36	2.92	14.16	19.22	247.5*32*20	6	972	2184

Grill cover options



Accessories buckle optional



Technical Data Sheet

Code No.	DB151B -600-15W	DB151B -1200-30W	DB151B -1500-37W	DB151B -1800-45W	DB151B -2400-60W		
Dimension(mm)	L615*W62*H29	L1208*W62*H29	L1505*W62*H29	L1802*W62*H29	L2395*W62*H29		
Cutout (mm)	L607*W54	L1201*W54	L1498*W54	L1794*W54	L2388*W54		
Watt(W)	15W	30W	37W	45W	60W		
Rated Input Voltage(V)	AC 220-240V						
Input Voltage(V)	AC 200-264V						
LED Module Input	-						
Light Source	SMD						
SDCM	<6						
CCT(K)	1-CCT: 3000K/4000K/5000K/5700K 3-CCT: 3000K + 4000K + 5700K						
CCT Selection DIP Switch	YES						
Luminous Flux (lm) ±5% White finish	Non-DIM	1-CCT	1400-1600	2800-3200	3700-4200	4400-5000	5400-6200
	DIM		1400-1600	2800-3200	3700-4200	4400-5000	5400-6200
	Non-DIM	3-CCT	1450-1550	2900-3100	3500-3800	4200-4600	5400-5800
	DIM		1450-1550	2900-3100	3500-3800	4200-4600	5400-5800
Remark: If lamp body with black color, the lumen will decrease around 7%							
CRI	80						
Beam Angle (°)	White reflector (80°) Silver reflector (60°)						
UGR	White reflector (UGR N/A) Silver reflector (UGR<19)						
LED Driver	Built-out						
Dimming Option	DALI						
Sensor	-						
Emergency Kits	-						
Electrical Class	Class II						
Ingress Protection (IP Rating)	IP40						
Impact Resistance (IK Rating)	-						
Product Finishing(Base)	White RAL9016 / Black RAL9005						
Materials of Optics	PC						
Materials of Housing	Aluminum						
Lifetime (hr)	50000H						
Glow wire test (°C)	750°C						
Operating Temp. (°C)	-20°C ~45°C						
Storage Temp. (°C)	-20°C ~65°C						
Installation	Recessed						

Driver Datasheet(Non-dimmable)

Total load wattage		15W	30W	37W	45W	60W
Output	Output Voltage range	DC30-40V				
	Rated output current	400mA	800mA	1000mA	1200mA	1500mA
	Line Regulation	±5%				
	Setup, Rise Time	≤500ms @230V				
	Flickering Index	0.5%(NO RISK)				
Input	Input Voltage	AC 200-264V				
	Rated Input Voltage(V)	AC 220-240V				
	Frequency	50/60 Hz				
	Input Current	≤0.1A	≤0.18A	≤0.23A	≤0.27A	≤0.34A
	Rated Input Current	≤0.09A	≤0.17A	≤0.21A	≤0.25A	≤0.31A
	Power Factor	0.9				
	THD	<20% @230V				
	Efficiency	≥88%		≥90%		
Protection	No load wattage	<0.5W@230V				
	Short circuit protection	Pass				
	Over voltage protection	Pass				
	Over temperature protection	Pass				
Safety & EMC	Withstand voltage	I/P-FG:1.5KVac,<5mA 60S				
	Isolation Resistance	500VDC, ≥2M Ω				
	Surge	IEC/EN61000-4-5(P<25W; L-N:500V, L/N-PE:1KV)	IEC/EN61000-4-5 (P≥25W, L-N:1KV, L/N-PE:2KV)			
	EMC Emission	EN55015, EN61000-3-2				
	EMC Immunity	EN61000-4-2,3,4,5,6,8,11; EN61547				

Driver Datasheet(DALI Dimmable)

Total load wattage		15W	30W	37W	45W	60W
Output	Output Voltage range	DC30-40V				
	Rated output current	400mA	800mA	950mA	1200mA	1500mA
	Line Regulation	±5%				
	Setup, Rise Time	<1s @230V				
	Flickering Index	3%(NO RISK)		6%(NO RISK)		
Input	Input Voltage	AC 180-264V				
	Rated Input Voltage(V)	AC 200-240V				
	Frequency	50/60 Hz				
	Input Current	≤0.1A	≤0.19A	≤0.23A	≤0.28A	≤0.37A
	Rated Input Current	≤0.09A	≤0.17A	≤0.21A	≤0.25A	≤0.34A
	Power Factor	0.9				
	THD	<20% @230V				
	Efficiency	≥83%	≥84%	≥85%	≥86%	≥88%
Protection	No load wattage	<0.5W@230V				
	Short circuit protection	Pass				
	Over voltage protection	Pass				
	Over temperature protection	Pass				
Safety & EMC	Withstand voltage	I/P-O/P:3.75KV <5mA 60S				
	Isolation Resistance	I/P-O/P: 500VDC, ≥100M Ω				
	Surge	IEC/EN61000-4-5(P<25W; L-N:500V)	IEC/EN61000-4-5 (P≥25W, L-N:1KV)			
	EMC Emission	EN55015, EN61000-3-2				
	EMC Immunity	EN61000-4-2,3,4,5,6,8,11; EN61547				

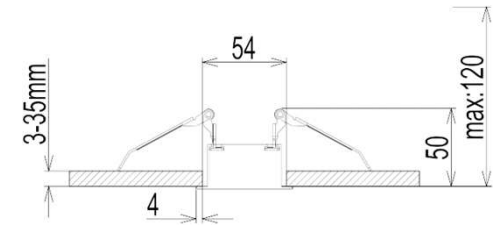
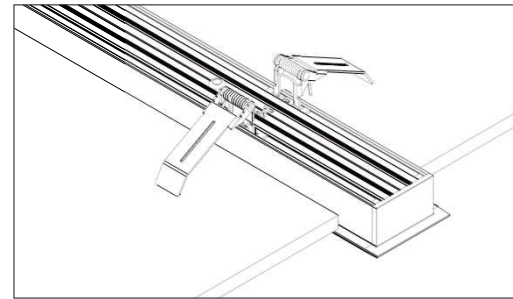
Installation Procedure

WARNING

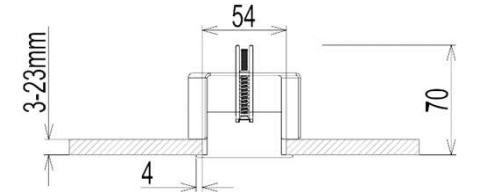
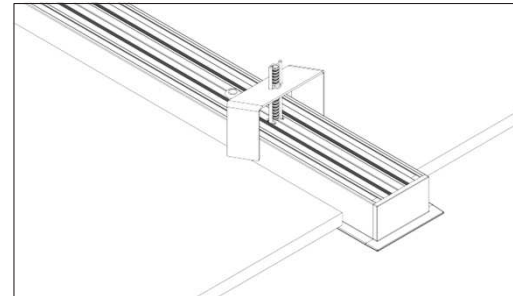
- 1.Switch off before installation.
- 2.Switch on only after complete Installation and examination of the circuit.
- 3.Professional electrician for installation and maintenance only.



Accessories buckle optional



Recessed installation with type H buckle
Adapt for horizontal installation with mounting wall thickness of 3-35mm

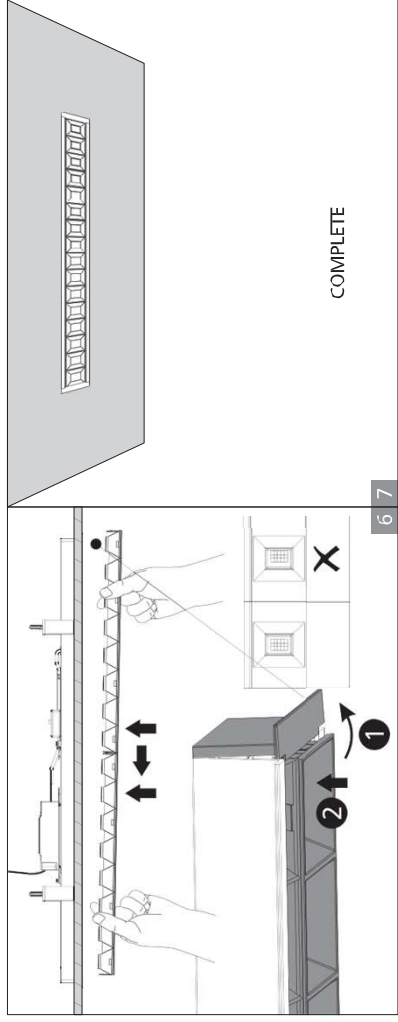
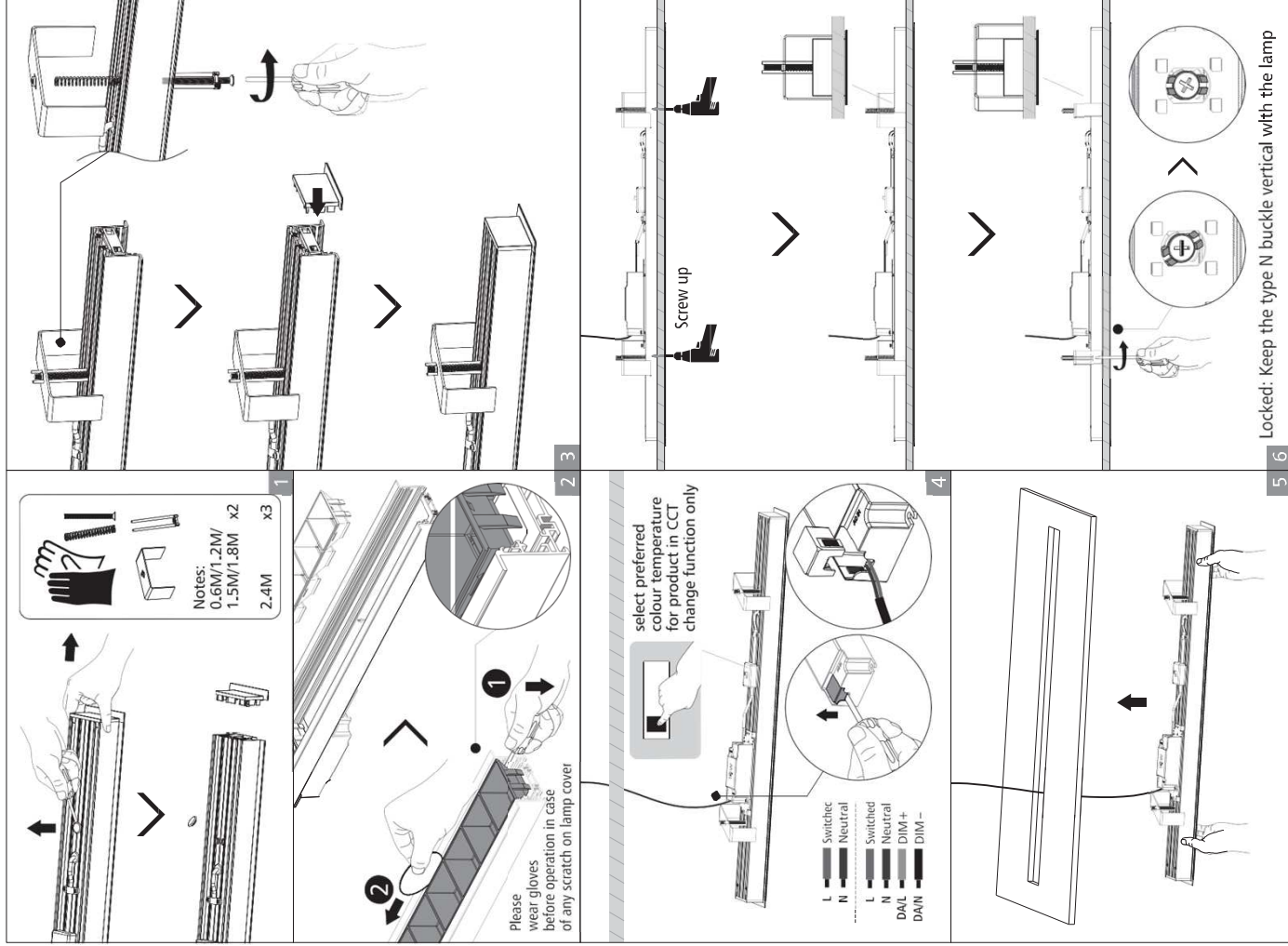


Recessed installation with type N buckle
Adapt for horizontal / vertical mounting with mounting wall thickness of 3-23mm

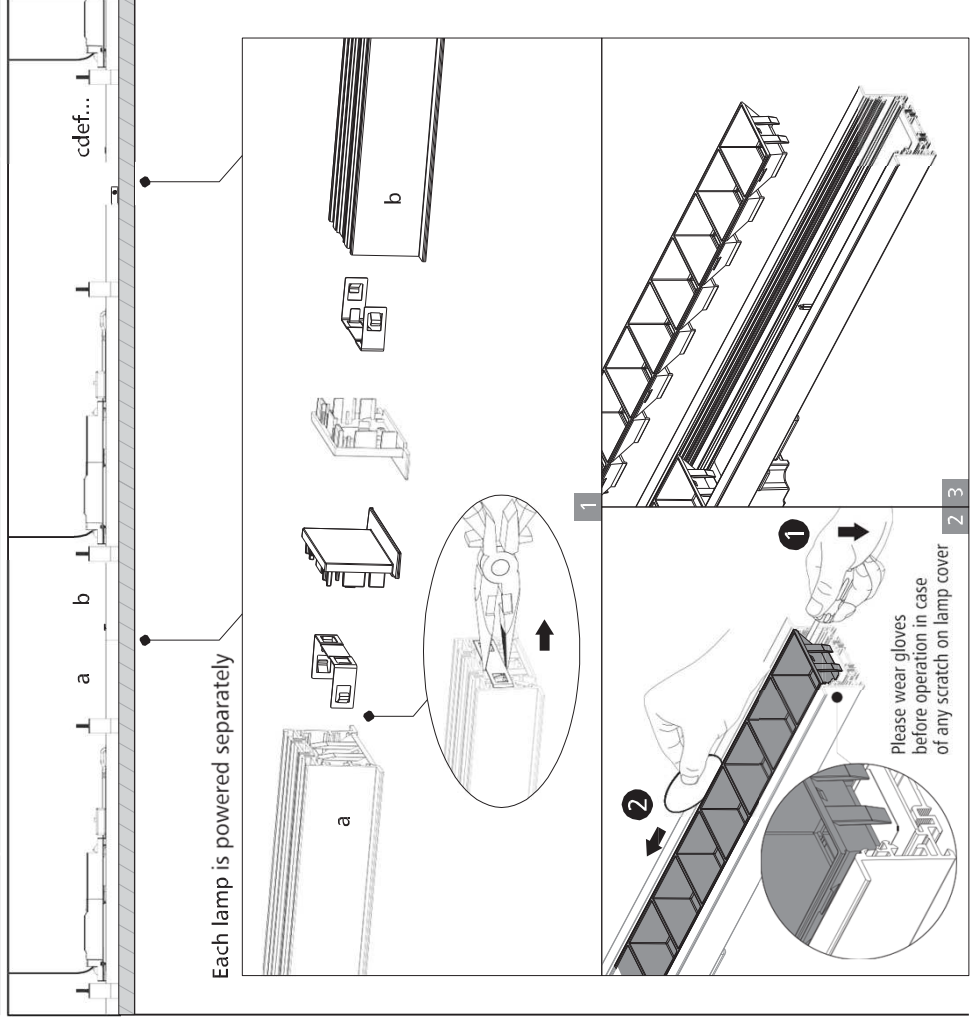
Cutout (mm)

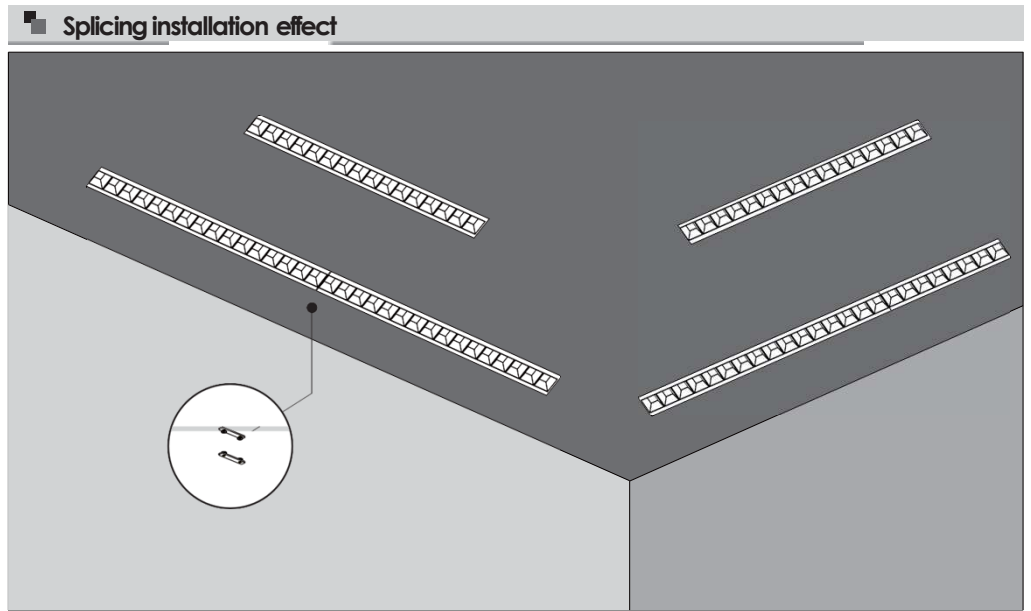
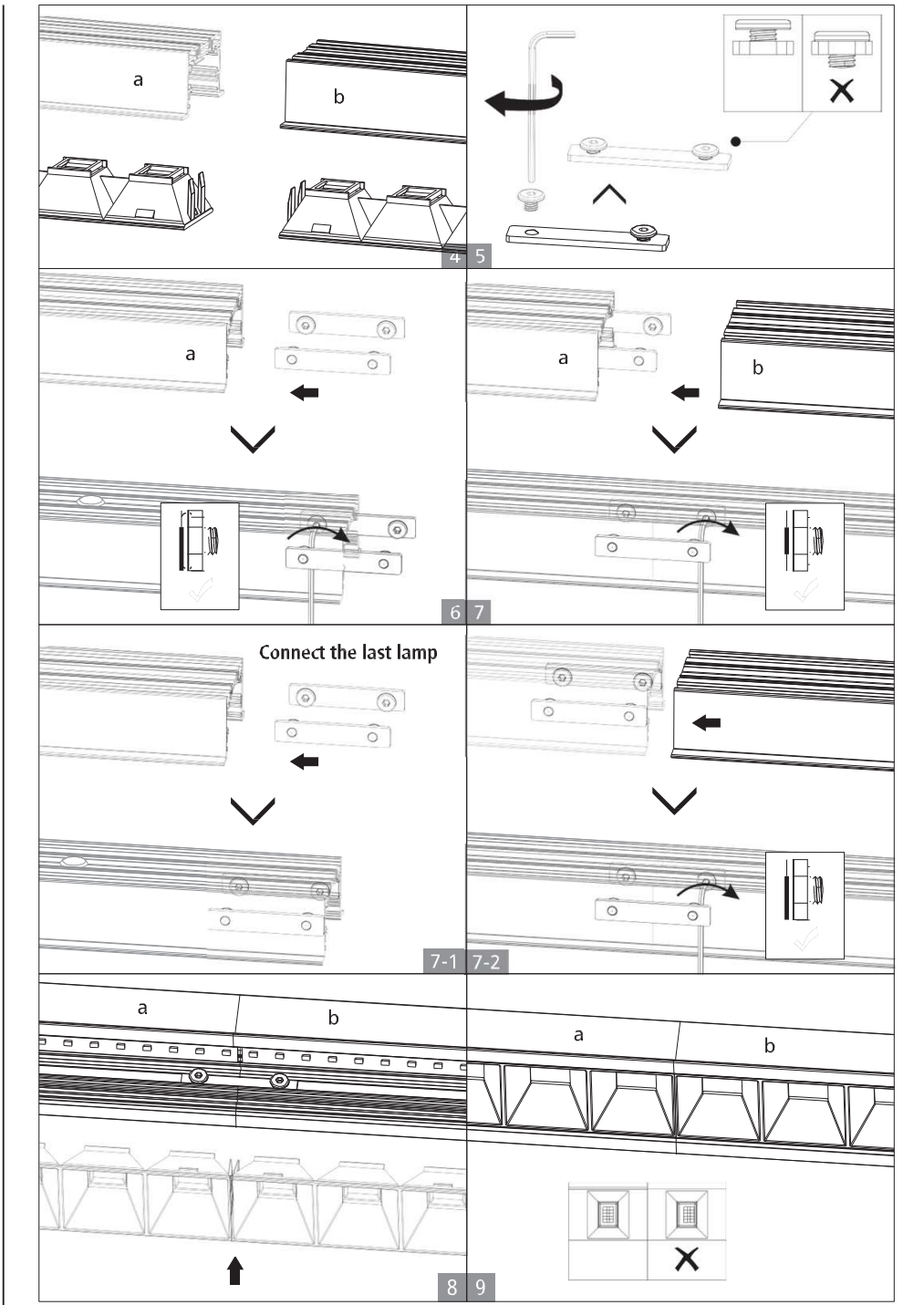
Dimension with end cap(mm)	615	1208	1505	1802	2395
Dimension without end cap(mm)	593.5	1187	1484	1780.5	2374
Cutout(mm) for single lamp	L607*W54	L1201*W54	L1498*W54	L1794*W54	L2388*W54
Cutout(mm) straight splicing	Dimension without end cap*N+14 (N=connection quantity) (for example cutout for 2pcs 600mm lamp splicing: 593.5*2+14=1201mm)				

Recessed Installation with type N buckle



Splicing Installation







RL Europe
Your partner in LED

www.rleurope.ch

info@rleurope.ch

TEL: +41 (0)91 6832255

Add: via E. Bossi 12/B, CH-6830 Chiasso (TI)