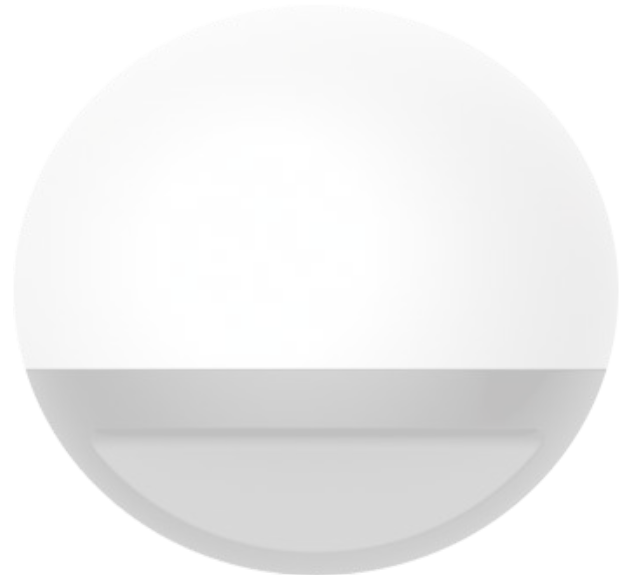


# WALL LIGHT



RL WALL LIGHT MAKES DIFFERENT YOUR BUILDING!



ROUND

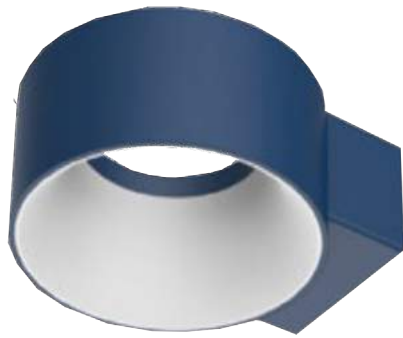


SQUARE



SEMICIRCLE





# WALL LIGHT ROUND

## WALL LIGHT: CHANGE THE EXTERIOR OF THE BUILDING

RL WALL LIGHT lamps are suitable for outdoor installations of buildings, back stairs and everywhere is needed an high IP rating without forgoing design and quality of light.

## WALL LIGHT: CAMBIA L'ESTERNO DELL'EDIFICIO

Le lampade WALL LIGHT della RL sono indicate per le installazioni esterne negli edifici, nelle scale di servizio e ovunque venga richiesto un grado di protezione IP elevato senza dover rinunciare all'estetica e alla qualità della luce.

## WALL LIGHT: ÄNDERT DIE AUSSENSEITE DES GEBÄUDES

Die WALL LIGHT Lampen von RL sind geeignet für Ausseninstallationen der Gebäude, für Hintertreppen und überall wo ein hoher Schutz des IP Leistung verlangt wird ohne auf Qualitätsverluste und Ästhetik des Lichtes zu verzichten.



### TECHNICAL DATA

ARTICLE NUMBER	140800RW	140800RN	140800RC
NAME OF PRODUCT	WALL LIGHT ROUND		
INNER CARTON	1	1	1
MASTER CARTON	1	1	1
WEIGHT SINGLE PIECE	0,560Kg	0,560Kg	0,560Kg

### GENERAL CARACTERISTICS

MAIN APPLICATION	BUILDINGS	BUILDINGS	BUILDINGS
NOMINAL LIFETIME	> 50.000 hours	> 50.000 hours	> 50.000 hours
SOURCE (LED TYPE)	SMD 2835	SMD 2835	SMD 2835
IP RATE	IP 65	IP 65	IP 65

### LIGHTING DATA

COLOR TEMPERATURE	3.000K ±300	4.000K ± 300	6.000K ±300
CRI	>85	>85	>85
LUMINOUS FLUX	>940 Lm	>1.000 Lm	>1.060 Lm
LLMF (LUMEN MAINTENANCE)	70% AFTER 25.000 hrs	70% AFTER 25.000 hrs	70% AFTER 25.000 hrs
RATED BEAM ANGLE	> 120°	> 120°	> 120°

### ELECTRICAL DATA

SYSTEM POWER	8W	8W	8W
START TIME (SECOND)	< 0,5 S	< 0,5 S	< 0,5 S
WARM-UP TIME TO 60% LIGHT OUTPUT	INSTANT FULL LIGHT	INSTANT FULL LIGHT	INSTANT FULL LIGHT
INPUT VOLTAGE	AC 220-240V	AC 220-240V	AC 220-240V
FREQUENCY	50/60 Hz	50/60 Hz	50/60 Hz
POWER FACTOR	> 90	> 90	> 90
DIMMABLE	NO	NO	NO
ENERGY SAVING	YES	YES	YES
WORKING TEMPERATURE	-20°/45°C	-20°/45°C	-20°/45°C
HUMIDITY	< 85%	< 85%	< 85%

### DIMENSION

DIMENSION OF THE PRODUCT	170x140x50 mm	170x140x50 mm	170x140x50 mm
--------------------------	---------------	---------------	---------------

### APPROVAL & APPLICATIONS CHARS

VDE MARKING	IN PROCESS	IN PROCESS	IN PROCESS
CE MARKING	YES	YES	YES
UL MARKING	IN PROCESS	IN PROCESS	IN PROCESS
ROHS COMPLIANCE	YES	YES	YES

# WALL LIGHT SQUARE

## WALL LIGHT: CHANGE THE EXTERIOR OF THE BUILDING

RL WALL LIGHT lamps are suitable for outdoor installations of buildings, back stairs and everywhere is needed an high IP rating without forgoing design and quality of light.

## WALL LIGHT: CAMBIA L'ESTERNO DELL'EDIFICIO

Le lampade WALL LIGHT della RL sono indicate per le installazioni esterne negli edifici, nelle scale di servizio e ovunque venga richiesto un grado di protezione IP elevato senza dover rinunciare all'estetica e alla qualità della luce.

## WALL LIGHT: ÄNDERT DIE AUSSENSEITE DES GEBÄUDES

Die WALL LIGHT Lampen von RL sind geeignet für Ausseninstallationen der Gebäude, für Hintertreppen und überall wo ein hoher Schutz des IP Leistung verlangt wird ohne auf Qualitätsverluste und Ästhetik des Lichtes zu verzichten.



### TECHNICAL DATA

ARTICLE NUMBER	140800SW	140800SN	140800SC
NAME OF PRODUCT		WALL LIGHT SQUARE	
INNER CARTON	1	1	1
MASTER CARTON	1	1	1
WEIGHT SINGLE PIECE	0,360Kg	0,360Kg	0,360Kg

### GENERAL CARACHTERISTICS

MAIN APPLICATION	BUILDINGS	BUILDINGS	BUILDINGS
NOMINAL LIFETIME	> 50.000 hours	> 50.000 hours	> 50.000 hours
SOURCE (LED TYPE)	SMD 2835	SMD 2835	SMD 2835
IP RATE	IP 65	IP 65	IP 65

### LIGHTING DATA

COLOR TEMPERATURE	3.000K ±300	4.000K ± 300	6.000K ±300
CRI	>85	>85	>85
LUMINOUS FLUX	>940 Lm	>1.000 Lm	>1.060 Lm
LLMF (LUMEN MAINTENANCE)	70% AFTER 25.000 hrs	70% AFTER 25.000 hrs	70% AFTER 25.000 hrs
RATED BEAM ANGLE	> 120°	> 120°	> 120°

### ELECTRICAL DATA

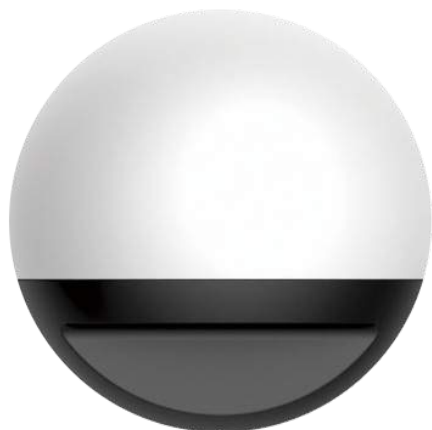
SYSTEM POWER	8W	8W	8W
START TIME (SECOND)	< 0,5 S	< 0,5 S	< 0,5 S
WARM-UP TIME TO 60% LIGHT OUTPUT	INSTANT FULL LIGHT	INSTANT FULL LIGHT	INSTANT FULL LIGHT
INPUT VOLTAGE	AC 220-240V	AC 220-240V	AC 220-240V
FREQUENCY	50/60 Hz	50/60 Hz	50/60 Hz
POWER FACTOR	> 90	> 90	> 90
DIMMABLE	NO	NO	NO
ENERGY SAVING	YES	YES	YES
WORKING TEMPERATURE	-20°/45°C	-20°/45°C	-20°/45°C
HUMIDITY	< 85%	< 85%	< 85%

### DIMENSION

DIMENSION OF THE PRODUCT	139x115x50 mm	139x115x50 mm	139x115x50 mm
--------------------------	---------------	---------------	---------------

### APPROVAL & APPLICATIONS CHARS

VDE MARKING	IN PROCESS	IN PROCESS	IN PROCESS
CE MARKING	YES	YES	YES
UL MARKING	IN PROCESS	IN PROCESS	IN PROCESS
ROHS COMPLIANCE	YES	YES	YES



# WALL LIGHT SEMICIRCLE

## WALL LIGHT: CHANGE THE EXTERIOR OF THE BUILDING

RL WALL LIGHT lamps are suitable for outdoor installations of buildings, back stairs and everywhere is needed an high IP rating without forgoing design and quality of light.

## WALL LIGHT: CAMBIA L'ESTERNO DELL'EDIFICIO

Le lampade WALL LIGHT della RL sono indicate per le installazioni esterne negli edifici, nelle scale di servizio e ovunque venga richiesto un grado di protezione IP elevato senza dover rinunciare all'estetica e alla qualità della luce.

## WALL LIGHT: ÄNDERT DIE AUSSENSEITE DES GEBÄUDES

Die WALL LIGHT Lampen von RL sind geeignet für Ausseninstallationen der Gebäude, für Hintertreppen und überall wo ein hoher Schutz des IP Leistung verlangt wird ohne auf Qualitätsverluste und Ästhetik des Lichtes zu verzichten.



### TECHNICAL DATA

ARTICLE NUMBER	140800SCW	140800SCN	140800SCC
NAME OF PRODUCT		WALL LIGHT SEMICIRCLE	
INNER CARTON	1	1	1
MASTER CARTON	1	1	1
WEIGHT SINGLE PIECE	0,360Kg	0,360Kg	0,360Kg

### GENERAL CARACTERISTICS

MAIN APPLICATION	BUILDINGS	BUILDINGS	BUILDINGS
NOMINAL LIFETIME	> 50.000 hours	> 50.000 hours	> 50.000 hours
SOURCE (LED TYPE)	SMD 2835	SMD 2835	SMD 2835
IP RATE	IP 54	IP 54	IP 54

### LIGHTING DATA

COLOR TEMPERATURE	3.000K ±300	4.000K ± 300	6.000K ±300
CRI	>85	>85	>85
LUMINOUS FLUX	>1.200 Lm	>1.280 Lm	>1.360 Lm
LLMF (LUMEN MAINTENANCE)	70% AFTER 25.000 hrs	70% AFTER 25.000 hrs	70% AFTER 25.000 hrs
RATED BEAM ANGLE	> 120°	> 120°	> 120°

### ELECTRICAL DATA

SYSTEM POWER	12W	12W	12W
START TIME (SECOND)	< 0,5 S	< 0,5 S	< 0,5 S
WARM-UP TIME TO 60% LIGHT OUTPUT	INSTANT FULL LIGHT	INSTANT FULL LIGHT	INSTANT FULL LIGHT
INPUT VOLTAGE	AC 220-240V	AC 220-240V	AC 220-240V
FREQUENCY	50/60 Hz	50/60 Hz	50/60 Hz
POWER FACTOR	> 90	> 90	> 90
DIMMABLE	NO	NO	NO
ENERGY SAVING	YES	YES	YES
WORKING TEMPERATURE	-20°/45°C	-20°/45°C	-20°/45°C
HUMIDITY	< 85%	< 85%	< 85%

### DIMENSION

DIMENSION OF THE PRODUCT	159x65,5 mm	159x65,5 mm	159x65,5 mm
--------------------------	-------------	-------------	-------------

### APPROVAL & APPLICATIONS CHARS

VDE MARKING	IN PROCESS	IN PROCESS	IN PROCESS
CE MARKING	YES	YES	YES
UL MARKING	IN PROCESS	IN PROCESS	IN PROCESS
ROHS COMPLIANCE	YES	YES	YES