



RL Europe

*«Give light and people will find the way»
Ella Baker*

LIGHTING AND ENERGY SAVING

LED.

Three letters that will change the lighting of the world.

In 2008, the **Joint Research Centre, JRC** (Joint Research Centre of the European Commission) estimated that lighting is responsible for about 8, 9 % of total primary energy consumption in the world and it is the cause of the emission of about 1,900 million tonnes (Mt) of CO₂ into the atmosphere each year.

The electricity demand for lighting is growing around 2.1% annually, and consumptions are the highest in the United States and in Europe. The residential and the commercial sectors are responsible for about 75% of total electricity consumption for lighting, followed by the industrial sector with around 18%.

Illuminating means consuming energy and thus spending money.

Consumption, quality and quantity of light output may considerably vary depending on the type of lamp you choose to install. More than about consumption, however, it is advisable to talk about **efficiency**; i.e. the luminous efficiency of a conventional light bulb.

The European Union since 2009 is constantly **improving the energy efficiency standards** by encouraging the use of lighting devices with low consumption and more eco-friendly, such as LED.

BENEFITS OF LED



- **Long-life:** in contrast to traditional lighting: 50.000-100.000hrs (LED) performance, with a radical decrease in technology maintenance costs;
- **High Energy Efficiency:** over 60% increase in light energy savings. Compared to traditional incandescent bulbs the saving achieved by using LED lighting is about 93% - compared to halogen lamps up to 90% - compared to metal halide lamps 70% - compared to fluorescent lamps 66%;
- **High safety:** LED contains silicon powder, it does not contain harmful gases to the health and has no toxic substances such as lead, nitrogen and mercury; there are no UV and I.R emissions.
- **Low-Voltage: with low heat emission:** LEDs are supplied at low voltage; maximum efficiency even at low temperatures. You can install LEDs in contact with plastic, wood, and all those materials that don't tolerate excessive heat. The saving in air-conditioning a very enlightened room can be considerable;
- **High luminous efficiency:** immediate ON/OFF switching, not flickering, compact light source with precise beam control of the light emitted. Excellent colour rendering.
- Application on various lighting solutions due to its **adaptability**.

RL Europe AG

RL Europe AG.

Better lighting with less energy consumption.

RL Europe AG continues to develop multiple applications of LED technology and it was one of the first companies to believe in this technology.

RL Europe AG products have entered the market with the best quality/price ratio; customers may observe substantial savings on electricity bills and on maintenance costs of installed products. Thanks to services and products specifically designed for each necessity, the RL Europe AG aims to demonstrate widespread the effectiveness and importance of adopting **energy efficiency policies**.

RL Europe AG always delivers the best service to its customers and a team of technicians is always available to answer specific questions in each technical field and to find the most suitable lighting solution for each project.

BRANCH OFFICE



OUR MISSION.

To conduct research on, develop widespread LED technology and its innumerable benefits.

RL Europe AG

The company works on launching and placing LED technology and lighting on the Swiss and European markets;

Reflexion Asia Ltd

The company works at the development and production of LED technology on the Asian market.

Reflexion Italia S.r.l.

The company markets LED technology and lighting branded RL on the Italian market. It is an exclusive dealer.

PRODUCT CATALOGUE



COMMERCIAL USE

Some of our products



LED Panel



Pendant Light



Track Light



Bracket Tube



Downlight ECO



ZOOMABLE

INDUSTRIAL USE

Some of our products



Street Light



Linear Track Light



Tri-proof



Super Flood Light



Sky Bay Light

To learn more about our product range, visit the website www.rleurope.ch

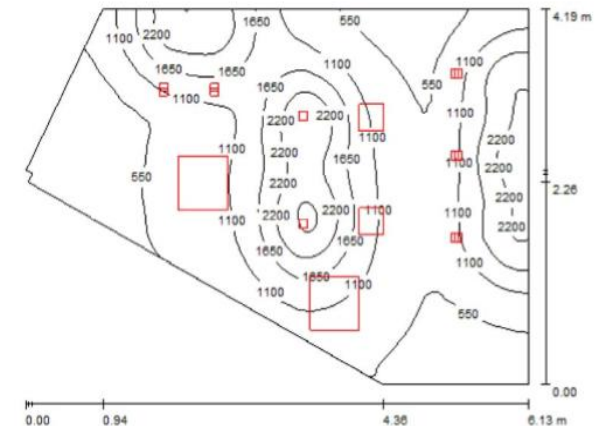
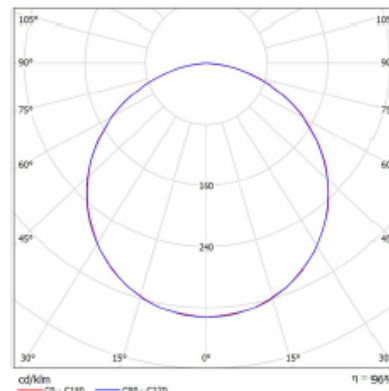
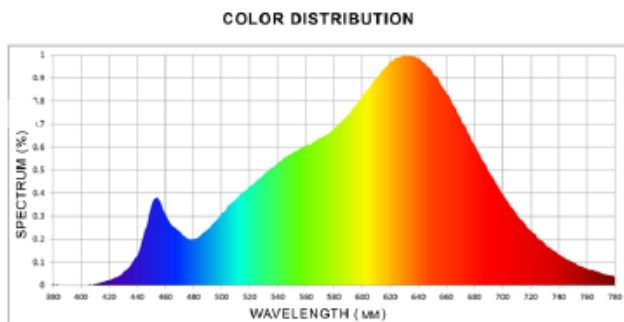


SERVICES

 SONS eRecycling



- Current lighting plan survey (lighting problems feedback, evaluation of visual comfort and legal requirements);
- Lighting calculus and proposal for a new lighting plan that includes the saving of consumption and greater visual comfort; possibility of developing a three-dimensions simulation of the existing layout;
- Detailed calculation on customized payback time (return on investment) according to customers' demands;
- Technical support services in accordance with costumers' needs;
- Installation and assembly.



REFERENCES

Some of our customers



*Albergo Ristorante Concabella SA
Autors SA
BSA Architecture
Burkhalter Management AG
Café Restaurant Tramschlaufe GmbH
Carpoint SA
Casram SA
Città di Lugano
Comune di Chiasso
Di Prego – Boutique*

*DSV Logistic SA
Forbo Giubiasco SA
FZSoNick SA
Garage Boffelli SA
Garage Val Sole Sagl
Generelli SA
Go4Golf
Gorc SA
Grünenfelder SA
HELIA Ladenbau GmbH*

*HELIA Suisse GmbH
KerrHawe SA
I Viaggi dell'Atlante
Minit Switzerland Ltd
Precicast SA
Rotofil Fabrics SA
SAIMU SA
Snopex SA
Valora Schweiz AG
Zürcher Trasporti SA*



Città di Lugano | Ice Rink "Reseghina"



Go4Golf



DSV Logistic SA



Valora Schweiz AG | k kiosk



Città di Lugano | Multi-storey car park Motta



I Viaggi dell'Atlante | Meeting Room

CONTACTS

RL Europe AG

Via Bossi 12/B
CH-6830 Chiasso (TI)

Tel: +41 (0)91 6832255
Fax: +41 (0)91 6832356
Email: info@rleurope.ch

VAT registration number : CHE-112.757.895



www.rleurope.ch