

SLIM LINEAR LIGHT



RL SLIM LINEAR LIGHT: A THIN DESIGN WITH AN AMAZING LIGHT



SLIM LINEAR LIGHT 60CM

SLIM LINEAR LIGHT: A UNIQUE DESIGN IN FEW CENTIMETERS

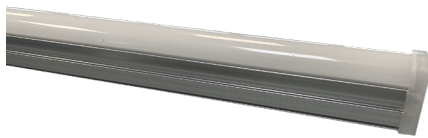
The new Slim Linear Light fixture with integrated LED differs from others because of its very small size without renouncing the incredible light of the latest SMD Philips.

SLIM LINEAR LIGHT: UN DESIGN ESCLUSIVO IN POCHISSIMI CENTIMETRI

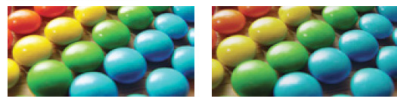
L'innovativa plafoniera Slim Linear Light con LED integrati si differenzia per la sua dimensione molto piccola senza però rinunciare all'incredibile luce dell'ultima generazione di LED SMD Philips.

SLIM LINEAR LIGHT: EIN EXKLUSIVES DESIGN IN WENIGEN CENTIMETERN

Die innovative Deckenlampe mit integrierter LED SLIM LINEAR LIGHT unterscheidet sich durch die reduzierten Dimensionen, ohne jedoch auf das unglaubliche Licht der neusten Generation von Philips SMD LED zu verzichten.



C.R.I. COMPARISON



OUR SLIM LINEAR CRI>85

NORMAL LIGHT C.R.I. 70

ACCESSORIES



ENDCUP
ART. 190016-1



EXTENDED KIT
1M (2 PIECES)
ART. N.190014-1



MOUNTING
CLIPS (3 PIECES)
ART.
N.190015MC



POWER CORD
2M
ART. N.190012-2

TECHNICAL DATA

ARTICLE NUMBER	190001W-12	190001N-12	190001C-12
NAME OF PRODUCT	SLIM LINEAR LIGHT 60CM		
INNER CARTON	1	1	1
MASTER CARTON	27	27	27
WEIGHT SINGLE PIECE	0,178Kg	0,178Kg	0,178Kg

GENERAL CHARACTERISTICS

MAIN APPLICATION	Commercial lighting	Commercial lighting	Commercial lighting
NOMINAL LIFETIME	> 50.000 hours	> 50.000 hours	> 50.000 hours
SOURCE (LED TYPE)	SMD 2835	SMD 2835	SMD 2835
IP RATE	IP 44	IP 44	IP 44

LIGHTING DATA

COLOR TEMPERATURE	3.000K	4.000K	6.000K
CRI	>85	>85	>85
LUMINOUS FLUX	>1.350 Lm	>1.500 Lm	>1.650 Lm
LLMF (LUMEN MAINTENANCE)	70% AFTER 25.000 hrs	70% AFTER 25.000 hrs	70% AFTER 25.000 hrs
RATED BEAM ANGLE	> 120°	> 120°	> 120°

ELECTRICAL DATA

SYSTEM POWER	12W	12W	12W
START TIME (SECOND)	< 0,5 S	< 0,5 S	< 0,5 S
WARM-UP TIME TO 60% LIGHT OUTPUT	INSTANT FULL LIGHT	INSTANT FULL LIGHT	INSTANT FULL LIGHT
INPUT VOLTAGE	AC 90-305V	AC 90-305V	AC 90-305V
FREQUENCY	50/60 Hz	50/60 Hz	50/60 Hz
POWER FACTOR	> 93	> 93	> 93
DIMMABLE	NO	NO	NO
ENERGY SAVING	YES	YES	YES
WORKING TEMPERATURE	-20°/45°C	-20°/45°C	-20°/45°C
HUMIDITY	< 85%	< 85%	< 85%

DIMENSION

LENGTH	600 mm	600 mm	600 mm
DIAMETER (mm)	28*37 mm	28*37 mm	28*37 mm

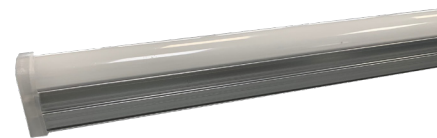
APPROVAL & APPLICATIONS CHARS

VDE MARKING	IN PROCESS	IN PROCESS	IN PROCESS
CE MARKING	YES	YES	YES
UL MARKING	IN PROCESS	IN PROCESS	IN PROCESS
ROHS COMPLIANCE	YES	YES	YES

SLIM LINEAR LIGHT 120CM

SLIM LINEAR LIGHT: A UNIQUE DESIGN IN FEW CENTIMETERS

The new Slim Linear Light fixture with integrated LED differs from others because of its very small size without renouncing the incredible light of the latest SMD Philips.



SLIM LINEAR LIGHT: UN DESIGN ESCLUSIVO IN POCHISSIMI CENTIMETRI

L'innovativa plafoniera Slim Linear Light con LED integrati si differenzia per la sua dimensione molto piccola senza però rinunciare all'incredibile luce dell'ultima generazione di LED SMD Philips.

SLIM LINEAR LIGHT: EIN EXKLUSIVES DESIGN IN WENIGEN CENTIMETERN

Die innovative Deckenlampe mit integrierter LED SLIM LINEAR LIGHT unterscheidet sich durch die reduzierten Dimensionen, ohne jedoch auf das unglaubliche Licht der neusten Generation von Philips SMD LED zu verzichten.



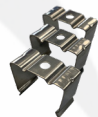
ACCESSORIES



ENDCUP
ART. 190016-1



EXTENDED KIT
1M (2 PIECES)
ART. N.190014-1



MOUNTING
CLIPS (3 PIECES)
ART.
N.190015MC



POWER CORD
2M
ART. N.190012-2



C.R.I. COMPARISON



OUR SLIM LINEAR CR185



NORMAL LIGHT C.R.I. 70

TECHNICAL DATA

ARTICLE NUMBER	190001W-20	190001N-20	190001C-20
NAME OF PRODUCT	SLIM LINEAR LIGHT 120CM		
INNER CARTON	1	1	1
MASTER CARTON	27	27	27
WEIGHT SINGLE PIECE	0,335Kg	0,335Kg	0,335Kg

GENERAL CHARACTERISTICS

MAIN APPLICATION	Commercial lighting	Commercial lighting	Commercial lighting
NOMINAL LIFETIME	> 50.000 hours	> 50.000 hours	> 50.000 hours
SOURCE (LED TYPE)	SMD 2835	SMD 2835	SMD 2835
IP RATE	IP 44	IP 44	IP 44

LIGHTING DATA

COLOR TEMPERATURE	3.000K	4.000K	6.000K
CRI	>85	>85	>85
LUMINOUS FLUX	>2.250 Lm	>2.500 Lm	>2.750 Lm
LLMF (LUMEN MAINTENANCE)	70% AFTER 25.000 hrs	70% AFTER 25.000 hrs	70% AFTER 25.000 hrs
RATED BEAM ANGLE	> 120°	> 120°	> 120°

ELECTRICAL DATA

SYSTEM POWER	20W	20W	20W
START TIME (SECOND)	< 0,5 S	< 0,5 S	< 0,5 S
WARM-UP TIME TO 60% LIGHT OUTPUT	INSTANT FULL LIGHT	INSTANT FULL LIGHT	INSTANT FULL LIGHT
INPUT VOLTAGE	AC 90-305V	AC 90-305V	AC 90-305V
FREQUENCY	50/60 Hz	50/60 Hz	50/60 Hz
POWER FACTOR	> 93	> 93	> 93
DIMMABLE	NO	NO	NO
ENERGY SAVING	YES	YES	YES
WORKING TEMPERATURE	-20°/45°C	-20°/45°C	-20°/45°C
HUMIDITY	< 85%	< 85%	< 85%

DIMENSION

LENGTH	1.200 mm	1.200 mm	1.200 mm
DIAMETER (mm)	28*37 mm	28*37 mm	28*37 mm

APPROVAL & APPLICATIONS CHARS

VDE MARKING	IN PROCESS	IN PROCESS	IN PROCESS
CE MARKING	YES	YES	YES
UL MARKING	IN PROCESS	IN PROCESS	IN PROCESS
ROHS COMPLIANCE	YES	YES	YES

SLIM LINEAR LIGHT 150CM

SLIM LINEAR LIGHT: A UNIQUE DESIGN IN FEW CENTIMETERS

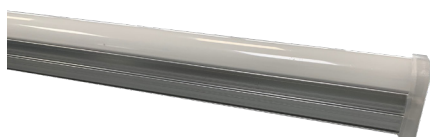
The new Slim Linear Light fixture with integrated LED differs from others because of its very small size without renouncing the incredible light of the latest SMD Philips.

SLIM LINEAR LIGHT: UN DESIGN ESCLUSIVO IN POCHISSIMI CENTIMETRI

L'innovativa plafoniera Slim Linear Light con LED integrati si differenzia per la sua dimensione molto piccola senza però rinunciare all'incredibile luce dell'ultima generazione di LED SMD Philips.

SLIM LINEAR LIGHT: EIN EXKLUSIVES DESIGN IN WENIGEN CENTIMETERN

Die innovative Deckenlampe mit integrierter LED SLIM LINEAR LIGHT unterscheidet sich durch die reduzierten Dimensionen, ohne jedoch auf das unglaubliche Licht der neusten Generation von Philips SMD LED zu verzichten.



C.R.I. COMPARISON



OUR SLIM LINEAR CRI>85



NORMAL LIGHT C.R.I. 70

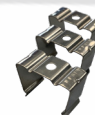
ACCESSORIES



ENDCUP
ART. 190016-1



EXTENDED KIT
1M (2 PIECES)
ART. N.190014-1



MOUNTING
CLIPS (3 PIECES)
ART.
N.190015MC



POWER CORD
2M
ART. N.190012-2

TECHNICAL DATA

ARTICLE NUMBER	190001W-25	190001N-25	190001C-25
NAME OF PRODUCT	SLIM LINEAR LIGHT 150CM		
INNER CARTON	1	1	1
MASTER CARTON	27	27	27
WEIGHT SINGLE PIECE	0,408Kg	0,408Kg	0,408Kg

GENERAL CHARACTERISTICS

MAIN APPLICATION	Commercial lighting	Commercial lighting	Commercial lighting
NOMINAL LIFETIME	> 50.000 hours	> 50.000 hours	> 50.000 hours
SOURCE (LED TYPE)	SMD 2835	SMD 2835	SMD 2835
IP RATE	IP 44	IP 44	IP 44

LIGHTING DATA

COLOR TEMPERATURE	3.000K	4.000K	6.000K
CRI	>85	>85	>85
LUMINOUS FLUX	>2.815 Lm	>3.125 Lm	>3.440 Lm
LLMF (LUMEN MAINTENANCE)	70% AFTER 25.000 hrs	70% AFTER 25.000 hrs	70% AFTER 25.000 hrs
RATED BEAM ANGLE	> 120°	> 120°	> 120°

ELECTRICAL DATA

SYSTEM POWER	25W	25W	25W
START TIME (SECOND)	< 0,5 S	< 0,5 S	< 0,5 S
WARM-UP TIME TO 60% LIGHT OUTPUT	INSTANT FULL LIGHT	INSTANT FULL LIGHT	INSTANT FULL LIGHT
INPUT VOLTAGE	AC 90-305V	AC 90-305V	AC 90-305V
FREQUENCY	50/60 Hz	50/60 Hz	50/60 Hz
POWER FACTOR	> 93	> 93	> 93
DIMMABLE	NO	NO	NO
ENERGY SAVING	YES	YES	YES
WORKING TEMPERATURE	-20°/45°C	-20°/45°C	-20°/45°C
HUMIDITY	< 85%	< 85%	< 85%

DIMENSION

LENGTH	1.500 mm	1.500 mm	1.500 mm
DIAMETER (mm)	28*37 mm	28*37 mm	28*37 mm

APPROVAL & APPLICATIONS CHARS

VDE MARKING	IN PROCESS	IN PROCESS	IN PROCESS
CE MARKING	YES	YES	YES
UL MARKING	IN PROCESS	IN PROCESS	IN PROCESS
ROHS COMPLIANCE	YES	YES	YES