

Entry / ECO

Standard / STD

Professional / PRO

ODM & OEM

Intelligent / INT



LED Downlight
DL179-B-I03 Series





Introduction

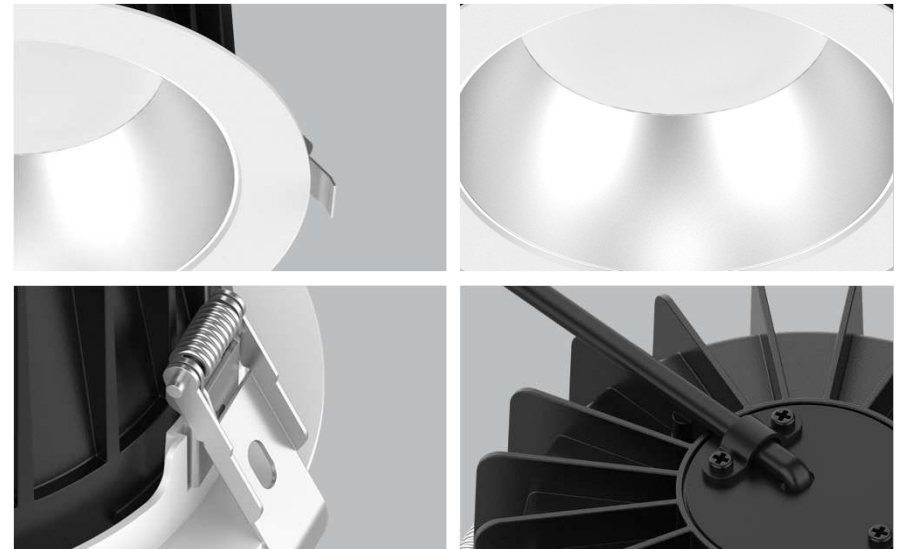
DL179 LED downlight with traditional deep reflector that provides perfect combination of high lighting efficiency, comfortable lighting and humanization design, without compromising on lighting performance (color rendering and color uniformity).

Features

- Die-casting housing provides excellent heat dissipation performance.
- A perfect alternative to traditional recessed luminaries.
- High lumen efficiency.
- Interchangeable reflector in white, matt silver, bright silver and black color.
- External flicker free driver.
- CASAMBI bluetooth smart control.

Application Areas

It is designed for general lighting applications in office, supermarket, shop, school, hotel, etc. It is also widely used for public areas, such as stairway, lobby, reception, corridors etc.





Bright Silver
Standard lumen



Matt Silver
15% lumen decrease



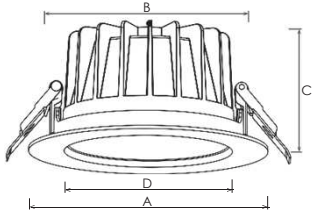
White
10% lumen decrease



Black
30% lumen decrease

Technical Data Sheet

Code No.	DL179A-3-10W -B-103	DL179B-3-10W -B-103	DL179B-3-13W -B-103	DL179-4-10W -B-103	DL179-4-18W -B-103	DL179-4-25W -B-103	DL179-6-18W -B-103	DL179-6-25W -B-103	DL179-6-35W -B-103	DL179-8-18W -B-103	DL179-8-25W -B-103	DL179-8-35W -B-103	DL179-8-40W -B-103	DL179-8-45W -B-103
Dimension(mm)	Ø95*54	Ø110*54		Ø145*78			Ø172*90			Ø228*99				
Cutout (mm)	Ø82-88	Ø90-95		Ø125-135			Ø150-165			Ø200-210				
Watt(W)	10W	10W	13W	10W	18W	25W	18W	25W	35W	18W	25W	35W	40W	45W
Rated Input Voltage(V)	AC 230V													
Input Voltage(V)	AC 220-240V													
LED Module Input	DC33-38V													
Light Source	SMD													
SDCM	<6													
CCT(K)	CCT: 2700K~6500K													
CCT Selection	-													
Luminous Flux (lm) ±5%	1000-1100	1000-1100	1250-1450	1000-1250	2100-2300	2800-3150	2100-2300	2800-3150	3300-3500	1760-1980	2350-2700	3650-3850	3920-4320	4360-4500
CRI	>80													
Beam Angle (°)	80°													
UGR	-													
LED Driver	Built-out													
Dimming protocol	Bluetooth													
Sensor	-													
Emergency Kits	-													
Electrical Class	Class II													
Ingress Protection (IP Rating)	IP54(Below Ceiling) IP40(Inside Ceiling)													
Impact Resistance (IK Rating)	IK06													
Product Finishing(Base)	White RAL 9016/Black RAL9005													
Materials of Optics	PC													
Materials of Housing	PC / Aluminum die-casting													
Lifetime (hr)	50,000h													
Glow wire test (°C)	850°C													
Operating Temp. (°C)	-20°C~45°C													
Storage Temp. (°C)	-20°C~60°C													
Installation	Recessed													



Measurement

Code	Dimension(mm)				Size(mm)	Product Weight (Kg)		Package weight (Kg)		Carton Size(cm)	Qty/CTN	20GP (pcs)	40HQ (pcs)
	A	B	C	D		N.W/PC	G.W/PC	N.W/CTN	G.W/CTN				
DL179A-3"	95	80	54	63	Ø95*54	0.23	0.31	8.28	12.7	48.5*37*29.5	36	17640	46008
DL179B-3"	110	86	54	69	Ø110*54	0.27	0.35	9.7	14.2	48.5*37*29.5	36	17640	46008
DL179-4"	145	120	78	102	Ø145*78	0.475	0.575	8.6	11.8	50*34*38.5	18	7668	15984
DL179-6"	172	145	90	127	Ø172*90	0.705	0.84	8.5	11.6	59*40*23.5	12	5616	12480
DL179-8"	228	195	99	176	Ø228*99	1.135	1.305	13.6	17.1	52*52*35	12	3168	7392

Driver Datasheet

Total load wattage		10W	13W	18W	25W	35W	40W	45W
Output	Output Voltage range	28-40V						
	Rated output current	250MA	300MA	450MA	600MA	850MA	950MA	1050MA
	Line Regulation	±5%						
	Setup, Rise Time	0.5S						
	Flickering Index	<3%						
Input	Input Voltage	180-264VAC						
	Rated Input Voltage(V)	200-240VAC						
	Frequency	50/60HZ						
	Input Current	0.06A	0.07A	0.1A	0.13A	0.19A	0.21A	0.3A
	Rated Input Current	0.04A	0.05A	0.08A	0.1A	0.16A	0.18A	0.21A
	Power Factor	0.9						
	THD	iec61000-3-2						
	Efficiency	>72%	>75%	>80%	>82%	>85%	>85%	>85%
	No load wattage	0.5W						
	Protection	Short circuit protection	PASS					
Over voltage protection		PASS						
Over temperature protection		PASS						
Safety & EMC	Withstand voltage	I/P-O/P:3.75KVac,<5mA 60S						
	Isolation Resistance	I/P-O/P: 500VDC, ≥4M Ω						
	Surge	IEC/EN61000-4-5(P<25W; L-N:500V, L/ N-PE:1KV)			IEC/EN61000-4-5 (P≥25w L-N:1KV, L/N-PE:2KV)			
	EMC Emission	EN55015, EN61000-3-2						
	EMC Immunity	EN61000-4-2,3,4,5,6,8,11; EN61547						

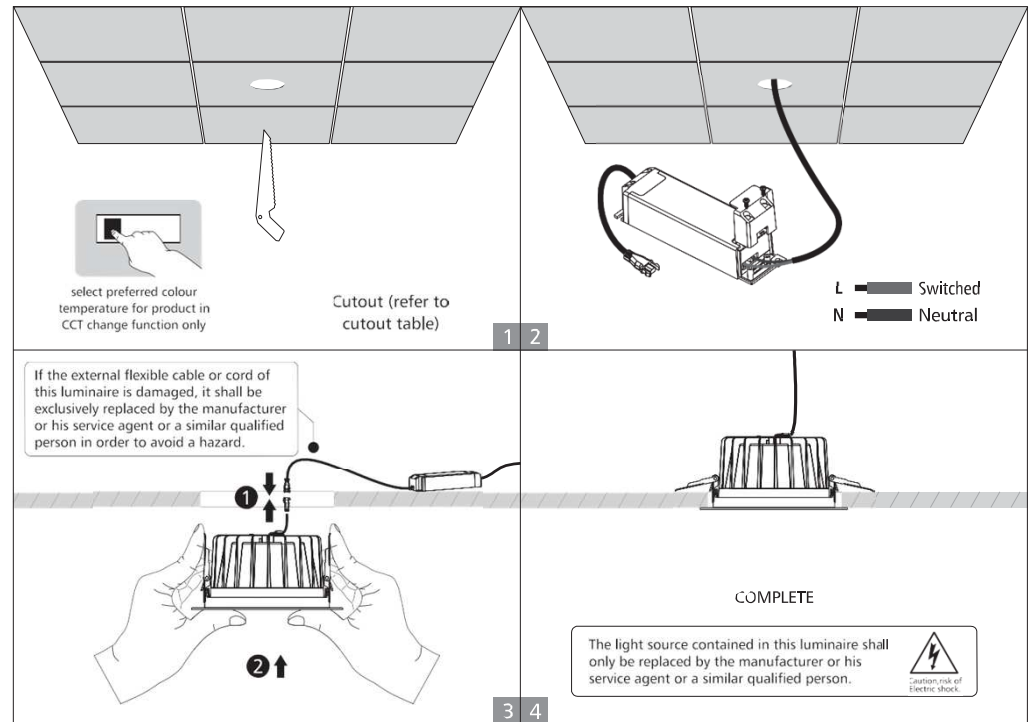
Installation Procedure

WARNING

1. Switch off before installation.
2. Switch on only after complete installation and examination of the circuit.
3. Professional electrician for installation and maintenance only.



Downlight with external driver





RL Europe
Your partner in LED

www.rleurope.ch

info@rleurope.ch

TEL: +41 (0)91 6832255

Add: via E. Bossi 12/B, CH-6830 Chiasso (TI)