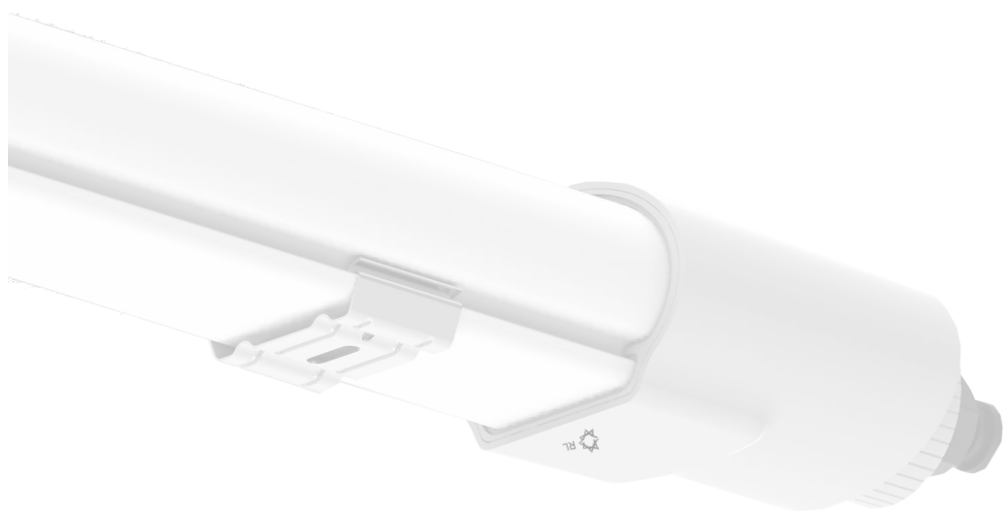


LED TRIPROOF IP66

TRIPROOF: THE NEW GENERATION OF LIGHTING



LED TRIPROOF IP66

LED TRIPROOF: THE NEW GENERATION OF LIGHTING

IP66 LED ceiling light with polycarbonate/aluminum body.

It is an ideal solution for quick replacement in outdoor spaces such as industrial areas and parking lots. Sizes are extremely compact.

IP66 protection rating up to IK10.



LED TRIPROOF: ILLUMINAZIONE DI NUOVA GENERAZIONE

Plafoniera IP66 a LED con corpo in policarbonato/alluminio.

È la soluzione ideale per la sostituzione rapida in ambienti esterni come le aree industriali e i parcheggi. Le dimensioni sono estremamente compatte. Grado di protezione IP66 fino a IK10.

LED TRIPROOF: DIE NEUE LICHTGENERATION

IP66 LED-Deckenleuchte mit Polycarbonat/Aluminium Körper.

Sind ideal für den schnellen Austausch an externen Standorte wie Industrieflächen und Parkplätze. Äusserst kompakte Größen.

Schutzart IP66 bis IK10.



C.R.I. COMPARISON



OUR TRIPROOF CRI-85

NORMAL LIGHT C.R.I. 70

TECHNICAL DATA

ARTICLE NUMBER	100147IP/100148IP/ 100149IP	100150IP/100151IP/ 100152IP	100153IP/100154IP/ 100155IP
NAME OF PRODUCT	TRIPROOF 70CM	TRIPROOF 130CM	TRIPROOF 130CM
INNER CARTON	1	1	1
MASTER CARTON	12	8	8
WEIGHT SINGLE PIECE	0,8 Kg	1 Kg	1 Kg

GENERAL CHARACTERISTICS

MAIN APPLICATION	Commercial lighting	Commercial lighting	Commercial lighting
NOMINAL LIFETIME	50.000 hours	50.000 hours	50.000 hours
SOURCE (LED TYPE)	SMD 2835	SMD 2835	SMD 2835
IP RATE/IK RATE	IP66/IK10	IP66/IK10	IP66/IK10

LIGHTING DATA

COLOR TEMPERATURE	3.000/4.000/5.000K ±300K	3.000/4.000/5.000K ±300K	3.000/4.000/5.000K ±300K
CRI	>85	>85	>85
LUMINOUS FLUX	2.150/2.300/2.400 Lm	2.750/2.900/3.000 Lm	3.350/3.500/3.600 Lm
LLMF (LUMEN MAINTENANCE)	≥0,8	≥0,8	≥0,8
RATED BEAM ANGLE	>140°	>140°	>140°
LEDs (pcs)	48	60	72

ELECTRICAL DATA

SYSTEM POWER	20W ±5%	25W ±5%	30W ±5%
POWER FACTOR	>0,95	>0,95	>0,95
POWER EFFICIENCY	>90%	>90%	>90%
THD	<15%	<15%	<15%
START TIME (SECOND)	<0,5S	<0,5S	<0,5S
WARM-UP TIME TO 60% LIGHT OUTPUT	<2S	<2S	<2S
INPUT VOLTAGE	AC 100-277V	AC 100-277V	AC 100-277V
FREQUENCY	50/60Hz	50/60Hz	50/60Hz
OUTPUT VOLTAGE	DC 65-75V	DC 65-75V	DC 65-75V
OUTPUT CURRENT	260mA	390mA	390mA
DIMMABLE	AVAILABLE	AVAILABLE	AVAILABLE
ENERGY SAVING	YES	YES	YES
WORKING TEMPERATURE	-20/65°C	-20/65°C	-20/65°C
WORKING HUMIDITY	15-90RH	15-90RH	15-90RH
ELECTRICAL CLASSIFICATION	II	II	II

DIMENSION

DIMENSION OF THE PRODUCT	700x78x53,5 mm	1.300x78x53,5 mm	1.300x78x53,5 mm
MATERIAL	PC+ALLUMINUM	PC+ALLUMINUM	PC+ALLUMINUM

APPROVAL & APPLICATION CHARS

VDE MARKING	NO	NO	NO
CE MARKING	YES	YES	YES
UL MARKING	NO	NO	NO
RoHS COMPLIANCE	YES	YES	YES

LED TRIPROOF IP66

LED TRIPROOF: THE NEW GENERATION OF LIGHTING

IP66 LED ceiling light with polycarbonate/aluminum body. It is an ideal solution for quick replacement in outdoor spaces such as industrial areas and parking lots. Sizes are extremely compact. IP66 protection rating up to IK10.

LED TRIPROOF: ILLUMINAZIONE DI NUOVA GENERAZIONE

Plafoniera IP66 a LED con corpo in polycarbonato/alluminio. È la soluzione ideale per la sostituzione rapida in ambienti esterni come le aree industriali e i parcheggi. Le dimensioni sono estremamente compatte. Grado di protezione IP66 fino a IK10.

LED TRIPROOF: DIE NEUE LICHTGENERATION

IP66 LED-Deckenleuchte mit Polycarbonat/Aluminium Körper. Sind ideal für den schnellen Austausch an externen Standorte wie Industrieflächen und Parkplätze. Äusserst kompakte Größen. Schutzart IP66 bis IK10.



C.R.I. COMPARISON



OUR TRIPROOF CRI>85

NORMAL LIGHT C.R.I. 70

TECHNICAL DATA

ARTICLE NUMBER	100156IP/100157IP/ 100158IP	100159IP/100160IP/ 100161IP	100162IP/100163IP/ 100164IP
NAME OF PRODUCT	TRIPROOF 130CM	TRIPROOF 160CM	TRIPROOF 160CM
INNER CARTON	1	1	1
MASTER CARTON	8	6	6
WEIGHT SINGLE PIECE	1 Kg	1,2 Kg	1,2 Kg

GENERAL CHARACTERISTICS

MAIN APPLICATION	Commercial lighting	Commercial lighting	Commercial lighting
NOMINAL LIFETIME	50.000 hours	50.000 hours	50.000 hours
SOURCE (LED TYPE)	SMD 2835	SMD 2835	SMD 2835
IP RATE/IK RATE	IP66/IK10	IP66/IK10	IP66/IK10

LIGHTING DATA

COLOR TEMPERATURE	3.000/4.000/5.000K ±300K	3.000/4.000/5.000K ±300K	3.000/4.000/5.000K ±300K
CRI	>85	>85	>85
LUMINOUS FLUX	4.550/4.700/4.800Lm	4.550/4.700/4.800 Lm	5.750/5.900/6.000 Lm
LLMF (LUMEN MAINTENANCE)	≥0,8	≥0,8	≥0,8
RATED BEAM ANGLE	>140°	>140°	>140°
LEDs (pcs)	96	96	120

ELECTRICAL DATA

SYSTEM POWER	40W ±5%	40W ±5%	50W ±5%
POWER FACTOR	>0,95	>0,95	>0,95
POWER EFFICIENCY	>90%	>90%	>90%
THD	<15%	<15%	<15%
START TIME (SECOND)	<0,5S	<0,5S	<0,5S
WARM-UP TIME TO 60% LIGHT OUTPUT	<2S	<2S	<2S
INPUT VOLTAGE	AC 100-277V	AC 100-277V	AC 100-277V
FREQUENCY	50/60Hz	50/60Hz	50/60Hz
OUTPUT VOLTAGE	DC 65-75V	DC 65-75V	DC 65-75V
OUTPUT CURRENT	520mA	520mA	640mA
DIMMABLE	AVAILABLE	AVAILABLE	AVAILABLE
ENERGY SAVING	YES	YES	YES
WORKING TEMPERATURE	-20/65°C	-20/65°C	-20/65°C
WORKING HUMIDITY	15-90RH	15-90RH	15-90RH
ELECTRICAL CLASSIFICATION	II	II	II

DIMENSION

DIMENSION OF THE PRODUCT	1300x78x53,5 mm	1600x78x53,5 mm	1600x78x53,5 mm
MATERIAL	PC+ALLUMINIUM	PC+ALLUMINIUM	PC+ALLUMINIUM

APPROVAL & APPLICATION CHARS

VDE MARKING	NO	NO	NO
CE MARKING	YES	YES	YES
UL MARKING	NO	NO	NO
RoHS COMPLIANCE	YES	YES	YES

LED TRIPROOF IP66-EMERGENCY

LED TRIPROOF: THE NEW GENERATION OF LIGHTING

IP66 LED ceiling light with polycarbonate/aluminum body.

It is an ideal solution for quick replacement in outdoor spaces such as industrial areas and parking lots. Sizes are extremely compact.

IP66 protection rating up to IK10.



LED TRIPROOF: ILLUMINAZIONE DI NUOVA GENERAZIONE

Plafoniera IP66 a LED con corpo in policarbonato/alluminio.

È la soluzione ideale per la sostituzione rapida in ambienti esterni come le aree industriali e i parcheggi. Le dimensioni sono estremamente compatte. Grado di protezione IP66 fino a IK10.

LED TRIPROOF: DIE NEUE LICHTGENERATION

IP66 LED-Deckenleuchte mit Polycarbonat/Aluminium Körper.

Sind ideal für den schnellen Austausch an externen Standorte wie Industrieflächen und Parkplätze. Äusserst kompakte Größen.

Schutzart IP66 bis IK10.



BATTERY
DURATION

TECHNICAL DATA

ARTICLE NUMBER	100151IPE
NAME OF PRODUCT	EMERGENCY TRIPROOF
VOLTAGE	AC230V
POWER	4W
COLOR TEMPERATURE	4.000K
RATED BEAM ANGLE	120°
LIFESPAN	40.000 h
CRI	≥80
DIMMABLE	NO
DIMENSION	318X76X67 mm

DRIVER DATA SHEET

INPUT RATED VOLTAGE	AC230V
FREQUENCY	50/60Hz
INPUT VOLTAGE	AC200-240V
EFFICIENCY	≥80
TOTAL LOAD WATTAGE	4W ± 0,5W
RATED INPUT CURRENT	≤0,03A
FULL LOAD OUTPUT VOLTAGE	DC25-68V
RATED OUTPUT CURRENT	150-40mA
OUTPUT CURRENT RANGE	150-40mA ±5%
POWER TOLERANCE	±5%
CURRENT OUTPUT TOLERANCE	±5%
SHORT CIRCUIT PROTECTION	PASS
OVER VOLTAGE PROTECTION	PASS
OVER TEMPERATURE PROTECTION	PASS
BATTERY	7,4V 2.000mAh
LIFETIME	40.000 h (battery changeable)
BATTERY DURATION	≥3hrs
CHARGE PERIOD	≤24hrs
EMERGENCY SWITCHING TIME	1 S
WITHSTAND VOLTAGE	AC3750V

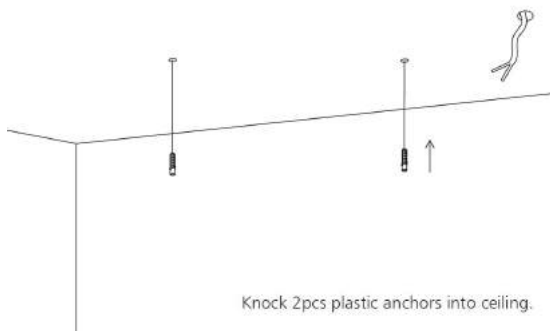
FIXTURE COMPATIBILITY

RATED WATTAGE	4W
ELECTRICAL CLASSIFICATION	II
INGRESS PROTECTION	IP66
OPERATING TEMPERATURE	-20°-45°C
OPERATING HUMIDITY	0-90%
STORAGE TEMPERATURE	-20°-65°C

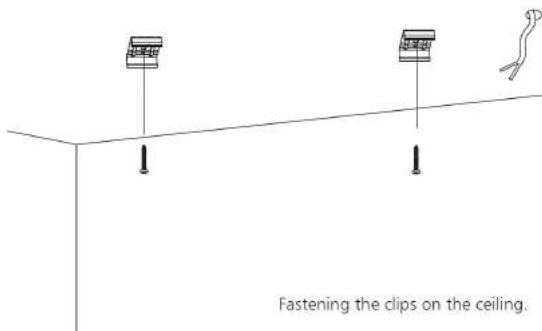
LED TRIPROOF IP66

INSTALLATION

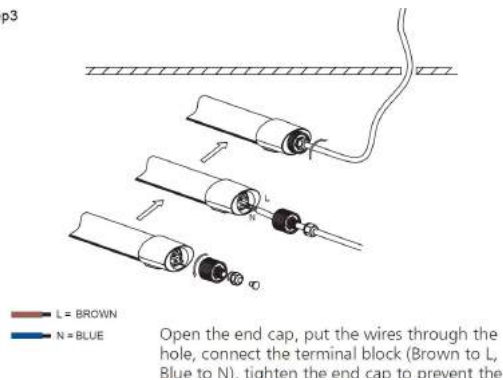
Step1



Step2



Step3



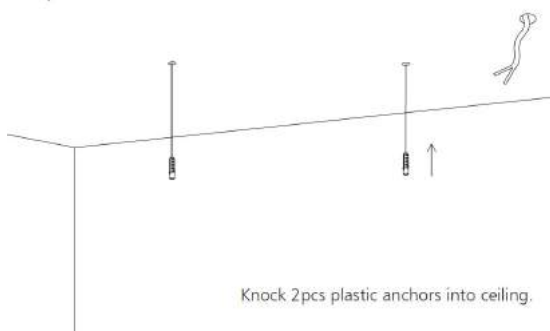
Step4



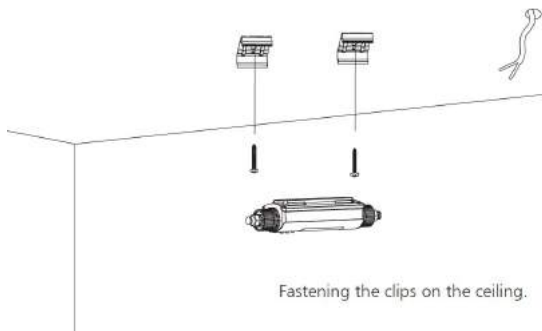
LED TRIPROOF IP66-EMERGENCY

INSTALLATION

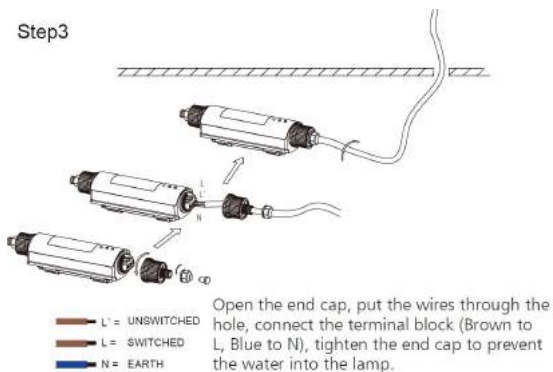
Step1



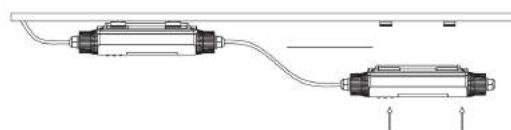
Step2



Step3



Step4



Put the LED batten back until it is stuck by clips.