

Entry /ECO

Standard /STD

Professional/PRO

ODM & OEM

Intelligent/INT



PRO
Specifications

LED Batten
DB104A Series



Introduction

This batten light is a pluggable and seamless splicing design with patent. It adopts high lumen SMD LED chip, up & down lighting design offers a softer lighting output, anti-glare with $UGR < 19$. It is screwless and snap assembly design, pluggable splicing, very convenient for installation and maintenance. Besides, slim lamp body with aluminium material, which provides a great thermal management.

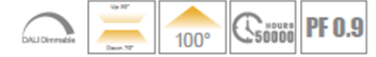
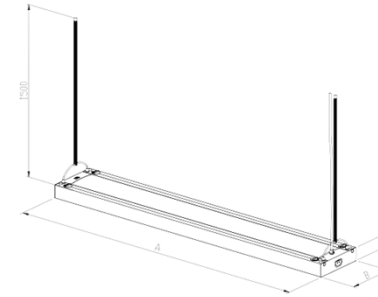
Features

- Up & down lighting design, up 30% & down 70%.
- Pluggable and seamless splicing design with patent.
- Interchangeable CCT(4000K+5700K) with slide switch.
- High lumen efficiency, 110lm/W.
- Anti-glare with $UGR < 19$.
- Internal flicker free driver.
- Dimming way: DALI dim

Application Areas

It is widely used in office, meeting room, school, shopping mall, hotel etc.





Technical Data Sheet

Code No.	DB104A-1200-40W	DB104A-1200-40W-DA	DB104A-1200-40W-DAP2	DB104A-1500-55W-DA	DB104A-1500-55W-DAP2
Dimension(mm)	1200×200×50			1500×200×50	
Cutout (mm)	-				
Watt(W)	40W			55W	
Rated Input Voltage(V)	AC230V	AC200-240V			
Input Voltage(V)	AC220-240V	AC180-264V			
LED Module Input	DC36V 1050mA			DC36V 1500mA	
Light Source	SMD				
SDCM	<6				
CCT(K)	3000K/4000K/5700K		2-CCT:4000K/5700K	3000K/4000K/5700K	2-CCT:4000K/5700K
CCT Selection DIP Switch	NO		YES	NO	YES
Luminous Flux (lm) ±5%	1-CCT	4200-4600	NO	5700-6300	NO
	2-CCT	NO	4200-4600	NO	5700-6300
CRI	Ra>80				
Beam Angle (°)	100°				
UGR	<19				
LED Driver	Built-in				
Dimming Option	-	DALI			
Sensor	-				
Emergency Kits	-				
Electrical Class	Class I				
Ingress Protection (IP Rating)	IP20				
Impact Resistance (IK Rating)	-				
Product Finishing(Base)	Gray				
Materials of Optics	PC				
Materials of Housing	Aluminum				
Lifetime (hr)	50,000h				
Glow wire test (°C)	750°C				
Operating Temp. (°C)	-20°C~45°C				
Storage Temp. (°C)	-20°C~65°C				
Installation	Pendant				

Measurement

Code	Dimension(mm)			Size (mm)	Product Weight(Kg)		Package weight(Kg)		Carton Size (cm)	Qty/CTN	20GP (pcs)	40HQ (pcs)
	A	B	C		N.W/PC	G.W/PC	N.W/CTN	GW/CTN				
DB104A-1200-40W	1200	200	50	1200×200×50	4.77	5.4	21.6	22.3	140.5*25*43	4	756	1788
DB104A-1200-40W-DA	1200	200	50	1200×200×50	4.91	5.55	22.2	22.9	140.5*25*43	4	756	1788
DB104A-1200-40W-DAP2	1200	200	50	1200×200×50	4.91	5.55	22.2	22.9	140.5*25*43	4	756	1788
DB104A-1500-55W-DA	1500	200	50	1500×200×50	5.79	6.52	13	14.2	170.5*25*22.5	2	596	1348
DB104A-1500-55W-DAP2	1500	200	50	1500×200×50	5.79	6.52	13	14.2	170.5*25*22.5	2	596	1348

Driver Datasheet(Non-dimmable)

Total load wattage		40W
Driver model No.		Xifanium 54W 0.9/1.05A 51V DS 230V 9290 028 31980
Output	Output Voltage range	DC23-51V
	Rated output current	1.05A
	Line Regulation	± 8%
	Setup, Rise Time	<0.5s @ 230Vac
	Flickering Index	NO RISK
Input	Input Voltage	AC220-240V
	Rated Input Voltage(V)	AC230V
	Frequency	50-60Hz
	Input Current	≤0.21A
	Rated Input Current	≤0.20A
	Power Factor	0.9
	THD	20%
	Efficiency	≥ 88%
	No load wattage	0.5W
	Protection	Short circuit protection
Over voltage protection		Pass
Over temperature protection		Pass
Safety & EMC	Withstand voltage	I/P-FG:1.5KVac,<5mA 60S
	Isolation Resistance	I/P-O/P: 500VDC, ≥100M Ω
	Surge	P≥25w L-N:1KV, L/N-PE:2KV
	EMC Emission	EN55015, EN61000-3-2
	EMC Immunity	IEC/EN61000-4-2,3,4,5,6,8,11; IEC/EN61547

Driver Datasheet(DALI Dimmable)

Total load wattage		40W	55W
Output	Output Voltage range	DC 3-42V	
	Rated output current	1050mA	1500mA
	Line Regulation	±5%	
	Setup, Rise Time	<0.5s @ 230Vac	
	Flickering Index	<5%	
Input	Input Voltage	AC180-264V	
	Rated Input Voltage(V)	AC200-240V	
	Frequency	47-63Hz	
	Input Current	0.25A	0.34A
	Rated Input Current	0.23A	0.31A
	Power Factor	>0.9	
	THD	<20% @ 230VAC	
	Efficiency	89%	
	No load wattage	<0.5W @ 230Vac	
Protection	Short circuit protection	Pass	
	Over voltage protection	Pass	
	Over temperature protection	Pass	
Safety & EMC	Withstand voltage	I/P-O/P:3.75KVac,<5mA 60S; I/P-FG:1.75KVac,<5mA 60S; O/P-FG:0.5KVac,<5mA 60S	
	Isolation Resistance	I/P-O/P: 500VDC, ≥100M Ω	
	Surge	IEC61000-4-5 L-N:2.5KV LN-PE:2.5KV	
	EMC Emission	IEC/EN55015, IEC/EN61000-3-2	
	EMC Immunity	IEC/EN61000-4-2,3,4,5,6,8,11; IEC/EN61547	

Installation Procedure

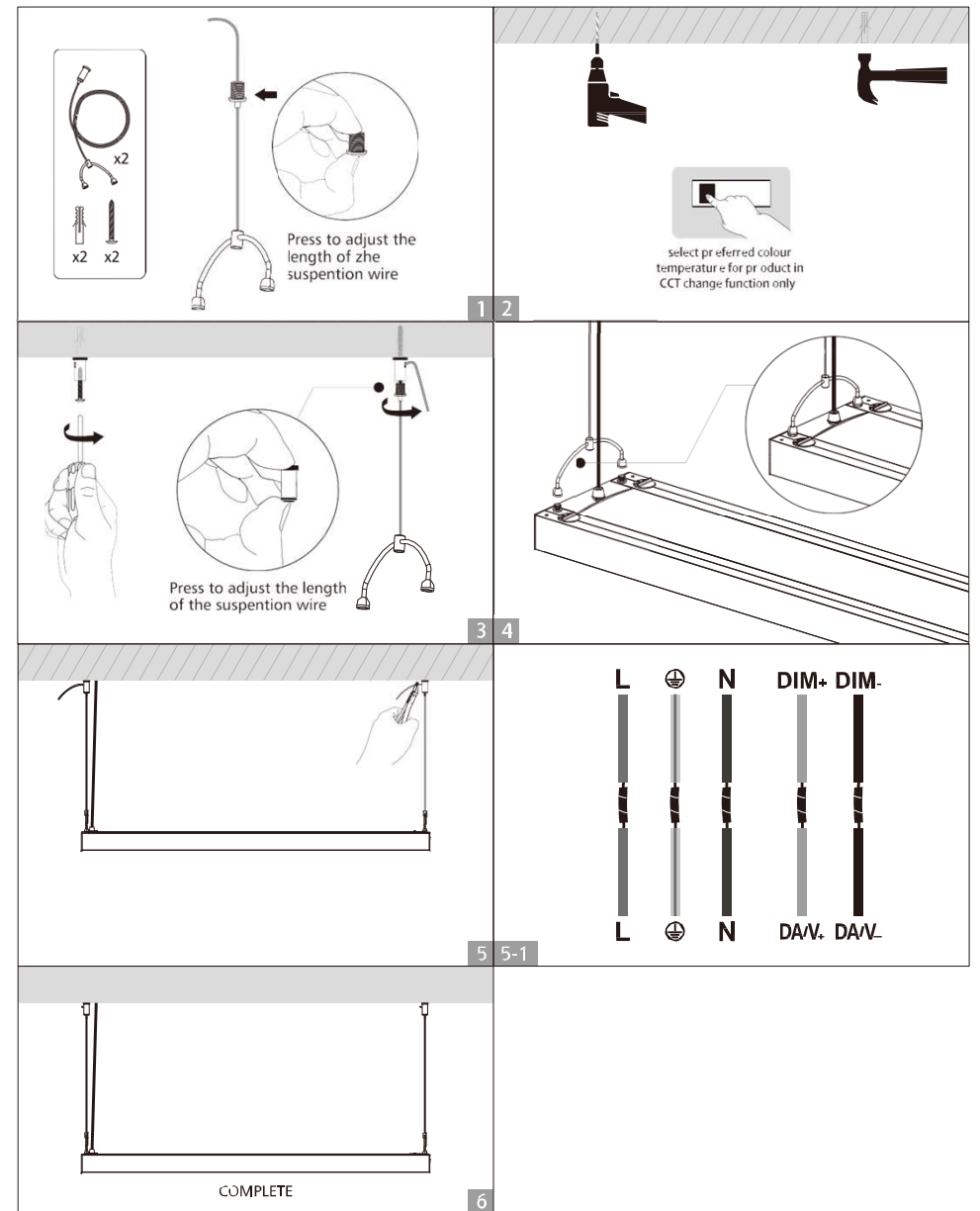
WARNING

- 1.Switch off before installation.
- 2.Switch on only after complete Installation and examination of the circuit.
- 3.Professional electrician for installation and maintenance only.

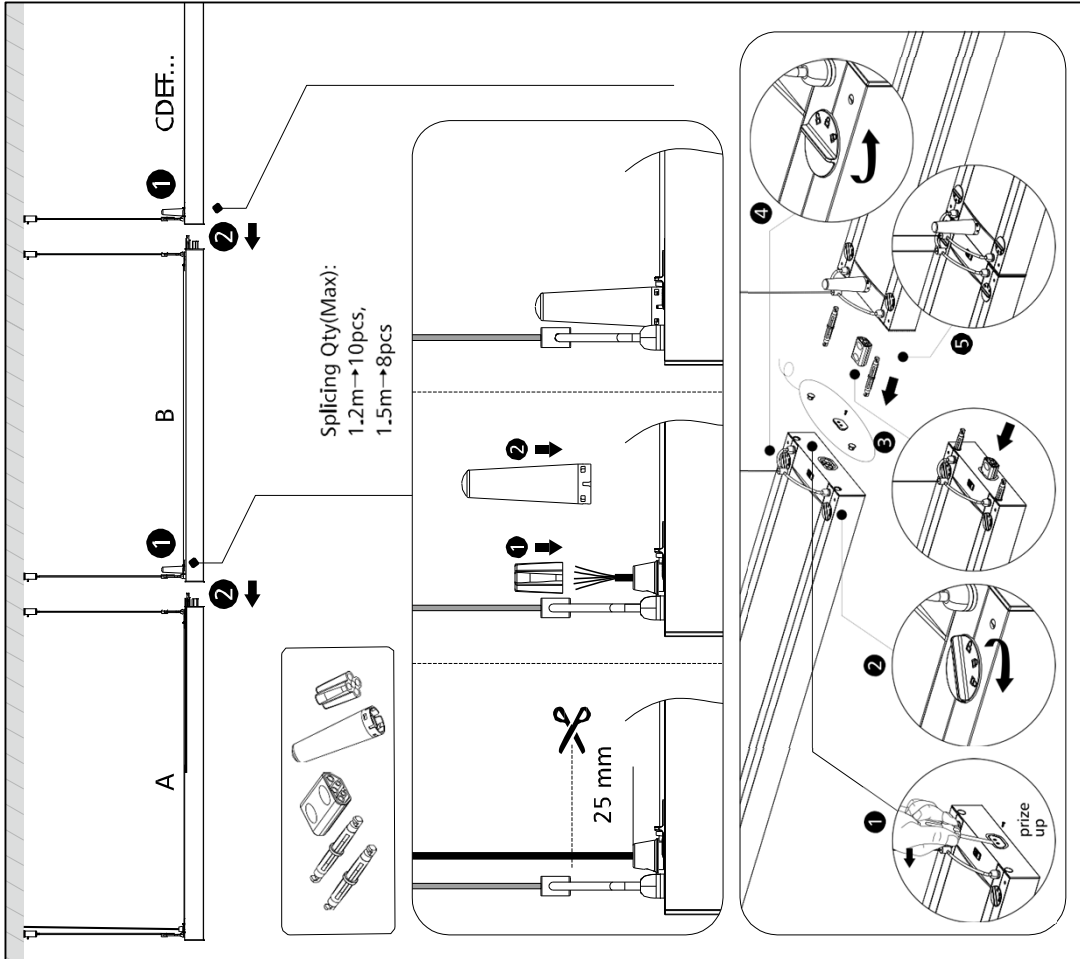


Turn Off power supply before starting any Installation. Read instructions & check you have all the tools & accessories to complete the installation correctly.

Pendant Installation



Splicing for pendant Installation





RL Europe
Your partner in LED

www.rleurope.ch

info@rleurope.ch

TEL: +41 (0)91 6832255

Add: via E. Bossi 12/B, CH-6830 Chiasso (TI)