

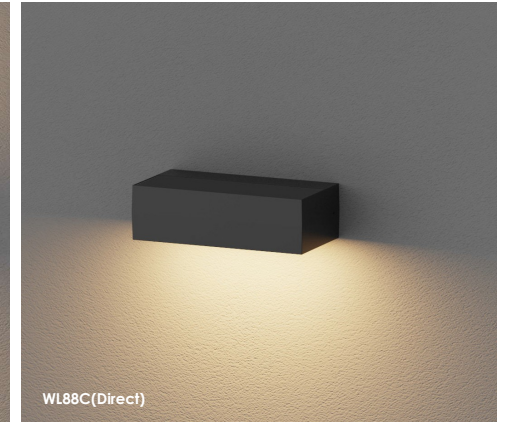
RESIDENTIAL LIGHTING



LED Wall Light
WL88 Series



WL88(Direct & indirect)



WL88C(Direct)



WL88B(Direct / indirect)

WL88

IP65

This wall lamp is a direct&indirect,direct/indirect lighting design, the lamp body is made of duminum de-casting, which has good heat dissipation, the lamp surface is sprayed with outdoor sand grain powder, which is corrosion resistant. Besides, it adopts SMD light source, so that can do CCT adjustable version. Strong structure design, IP65 waterproof will suit to a wider application area.

FEATURES

- Direct&indirect,direct/indirect lighting design.
- IP65 waterproof.
- Special reflector makes it a better wall washer effect.
- Interchangeable CCT(3000K+4000K)with slide switch.
- Loop in/loop out wire entry design.
- Internal flicker free driver.

APPLICATIONS

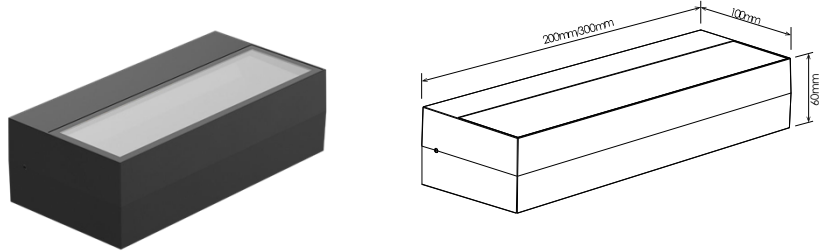
It is designed for indoor and outdoor lighting applications such as hotel, park, and corridors etc.



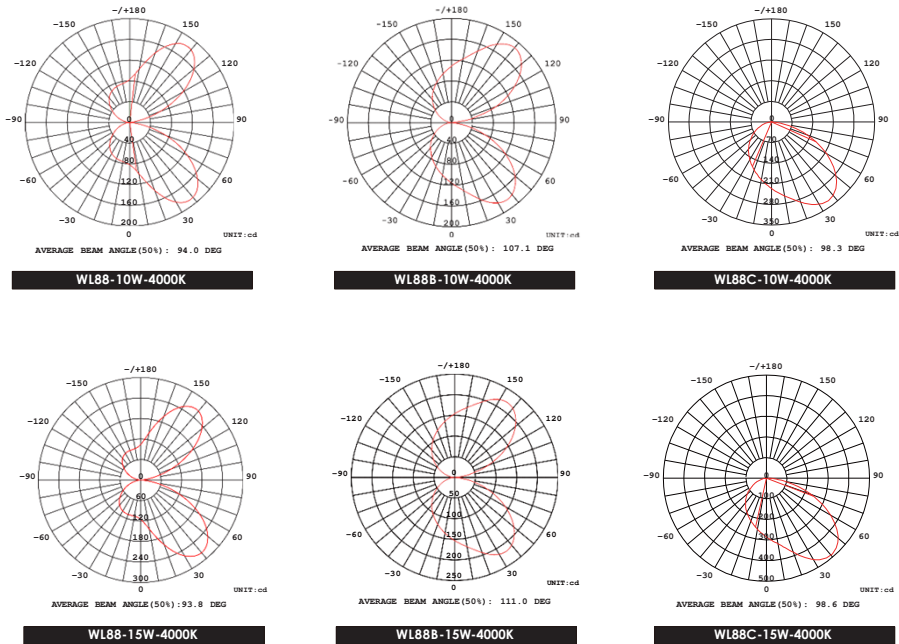
LED Wall Light



PRODUCT DIMENSION



OPTICS



BASIC INFORMATION

Housing Material	Die-Casting Aluminium
Product Finishing	White RAL9016/ Black RAL9005
Optic Material	PC
Light Source	SMD
SDCM	< 6
CRI	≥ 80
Lifetime(hr)	50,000h
LED Driver	Built-in; Flicker Free
Installation	Wall mount
Electical Class	Class I
Operating Temp.(°C)	-20°C~45°C
Storage Temp.(°C)	-20°C~65°C
Glow Wire Test (°C)	750°C

FEATURES & BENEFITS

CCT Selection DIP Switch	YES
Watt Selection DIP Switch	-
Dimming Option	Triac
Functions	-
UGR	-
Ingress Protection (IP Rating)	IP65
Impact Resistance (IK Rating)	-
Certification	CE / RoHS

TECHNICAL DATA SHEET

CODE	WL88-10W	WL88-15W	WL88B-10W	WL88B-15W	WL88C-10W	WL88C-15W		
Dimension(mm)	200*100*60	300*100*60	200*100*60	300*100*60	200*100*60	300*100*60		
Cutout(mm)	-							
Watt(W)	10W (direct & indirect)	15W (direct & indirect)	10W (direct / indirect)	15W (direct / indirect)	10W (direct)	15W (direct)		
Input Voltage	AC220-240V							
LED Module Input	-							
Light Source	SMD							
CCT(K)	1-CCT: 3000K/4000K/5000K 2-CCT: 3000K + 4000K							
CCT Selection DIP Switch	YES							
Luminous Flux (lm) ±5% CRI80	1-CCT	Non-DIM	600-750	850-1100	700-800	1050-1200	700-850	900-1000
		DIM	550-700	800-1050	600-750	1000-1150	650-800	850-950
	2-CCT	Non-DIM	600-750	850-1100	700-800	920-1020	700-800	950-1000
		DIM	550-700	800-1050	600-700	900-1000	650-750	900-950
Beam Angle (°)	60°*110° (Asymmetric 40°)		115°*110° (Asymmetric 40°)		80°*110° (Asymmetric 40°)			
UGR	-							
Dimming Option	Triac							
Sensor	NO							
Emergency	NO							
N.W/PC(KG)	0.71	1.09	0.71	1.09	0.71	1.09		
G.W/CTN(KG)	10.65	15.96	10.65	15.96	10.65	15.96		
Qty/CTN(PCS)	12	12	12	12	12	12		
Carton Size(mm)	510*260*270	505*360*270	510*260*270	505*360*270	510*260*270	505*360*270		

DRIVER DATASHEET(NON-DIMMABLE)

Total load wattage		10W	15W
Output	Rated output current	135mA	190mA
	Output Voltage range	DC60-75V	
	Line Regulation	±5%	
	Setup Rise Time	≤0.5S	
	Flickering Index	<3%(NO RISK)	
Input	Rated Input Voltage	AC220-240V	
	Input Voltage	AC198-264V	
	Frequency	50/60Hz	
	Rated Input Current	≤0.05A	≤0.08A
	Input Current	≤0.06A	≤0.09A
	Power Factor	-	0.9
	THD	-	
	Efficiency	≥85%	
Protection	No load wattage	≤0.5W	
	Short circuit protection	PASS	
	Over voltage protection	PASS	
	Over temperature protection	PASS	
Safety & EMC	Withstand voltage	-	
	Isolation Resistance	-	
	Surge	IEC/EN61000-4-5 (L-N:1KV, L/N-PE:2KV)	
	EMC Emission	EN55015, EN61000-3-2	
	EMC Immunity	EN61000-4-2,3,4,5,6,8,11; EN61547	

DRIVER DATASHEET(TRIAC DIMMABLE)

Total load wattage		10W	15W
Output	Rated output current	120mA	180mA
	Output Voltage range	DC65-75V	
	Line Regulation	±5%	
	Setup Rise Time	≤0.5S	
	Flickering Index	<5%(LOW RISK)	
Input	Rated Input Voltage	AC220-240V	
	Input Voltage	AC198-264V	
	Frequency	50Hz	
	Rated Input Current	≤0.05A	≤0.08A
	Input Current	≤0.06A	≤0.09A
	Power Factor	0.9	
	THD	-	
	Efficiency	≥81%	≥83%
Protection	No load wattage	≤1W	
	Short circuit protection	PASS	
	Over voltage protection	PASS	
	Over temperature protection	PASS	
Safety & EMC	Withstand voltage	-	
	Isolation Resistance	-	
	Surge	IEC/EN61000-4-5 (L-N:0.5KV, L/N-PE:1KV)	
	EMC Emission	EN55015, EN61000-3-2	
	EMC Immunity	EN61000-4-2,3,4,5,6,8,11; EN61547	



RL Europe

Your partner in LED

www.rleurope.ch

info@rleurope.ch

TEL: +41 (0)91 6832255

Add: via E. Bossi 12/B, CH-6830 Chiasso (TI)